



Malaysian Society of
Gastroenterology & Hepatology

Supported by



Meet in
Malaysia
BE Greater, Together.

“NEW BEGINNING
NEW SCIENCE”



Annual Scientific Meeting of **MSGH**

GUT 2022

19th to 21st August 2022

Kuala Lumpur Convention Centre
Kuala Lumpur, Malaysia

www.msgh.org.my

MSGH BULLETIN 2022 SUPPLEMENT

CONTENTS

MSGH Executive Committee 2021-2023 & Organising Committee, GUT 2022	2
Message from the President, MSGH 2021-2023 & Organising Chair GUT 2022	3
22 nd MSGH Oration - Professor Dr Govind K Makharia Citation by Professor Dr Ida Normiha Hilmi	4
19 th Panir Chelvam Memorial Lecture - Professor Dr Justin Che-Yuen Wu Citation by Professor Dr Lee Yeong Yeh	5
Programme Summary	6
Daily Programme	
• 19 th August 2022 (Friday)	7 - 9
• 20 th August 2022 (Saturday)	10 - 12
• 21 st August 2022 (Sunday)	13 - 14
Moderators / Chairpersons	15
Faculty Biodata	16 - 29
List of Abstracts	
• Lectures & Symposia	30 - 39
• E-Poster Presentations	40 - 52
• Oral Presentations	53 - 65
• Poster Presentations	66 - 222
Floor Plan	223
Trade Exhibition	224
Acknowledgements	225 - 226

MSGH EXECUTIVE COMMITTEE 2021-2023

President	Professor Dr Lee Yeong Yeh
President-Elect	Datuk Dr Raman Muthukaruppan
Immediate Past President	Professor Dr Raja Affendi Raja Ali
Honorary Secretary	Dr Haniza Omar
Honorary Treasurer	Dr Sattian Kollanavelu
Executive Committee Members	Professor Dr Ida Normiha Hilmi Datuk Dr Jayaram Menon Dato' Dr Mahendra Raj Dr Nik Razima Wan Ibrahim Datuk Dr Ryan Ponnudurai
Coopted Executive Committee Members	Dr Abraham Mathew George Dr Soon Su Yang Dr Tan Soek Siam Dr Alex Leow Hwong Ruey

ORGANISING COMMITTEE

Chair, Organising Committee & Chair, Scientific Committee	Professor Dr Lee Yeong Yeh
Co-Chair, Organising Committee	Datuk Dr Raman Muthukaruppan
Co-Chair, Scientific Committee	Dr Haniza Omar
Committee Members	Professor Dr Raja Affendi Raja Ali Dr Sattian Kollanavelu Datuk Dr Jayaram Menon Datuk Dr Ryan Ponnudurai Dato' Dr Mahendra Raj Professor Dr Ida Normiha Hilmi Dr Nik Razima Wan Ibrahim Dr Abraham Matthew George Dr Soon Su Yang Dr Tan Soek Siam Dr Alex Leow Hwong Ruey

MESSAGE



Dear Colleagues, Friends and Biomedical Industry Partners

The Organising Committee of **GUT 2022** with the theme “**New Beginning, New Science**” welcomes you to join us on **19th to 21st August 2022** at the **Kuala Lumpur Convention Centre (KLCC)** for the Annual Scientific Meeting of the Malaysian Society of Gastroenterology and Hepatology (MSGH). This year marks a New Beginning post-pandemic, and there are many New Sciences in the field, thus the theme for GUT 2022. As we transit into the ‘old normal’ post-pandemic, we have decided to hold GUT 2022 as a fully physical meeting to enable interaction and the bonding of fellowship and camaraderie which will not be possible with a virtual event.

The scientific highlights and sessions will all be recorded and will be made available to registered participants for a limited period after the meeting. The scientific content will not only feature the latest sciences highly relevant to clinical practice but also clinical topics tailored for busy clinicians. Essentially, the programme is designed for everyone with an interest in gut health including primary care practitioners, family physicians, scientists, surgeons, general physicians and gastroenterologists. As a regular feature, the meeting also welcome submissions of high-quality research papers and authors will stand a chance to win our prestigious Young Investigator Awards. In addition, we will have our industry partners at their physical booths welcoming you to their latest offerings in innovative products and other latest information.

I hope to meet up with you in-person.



Professor Dr Lee Yeong Yeh
President, MSGH 2021-2023 &
Organising Chair GUT 2022

22ND MSGH ORATION

PROFESSOR DR GOVIND K MAKHARIA

Citation by Professor Dr Ida Normiha Hilmi



“Celiac Disease: Opportunities and Challenges”

Professor Dr Govind K Makharia is a Professor in the Department of Gastroenterology and Human Nutrition, All India Institute of Medical Sciences, New Delhi, India. He received his training from the prestigious Postgraduate Institute of Medical Education and Research, Chandigarh, India. He has trained 96 fellows in gastroenterology and nine PhD students. He has published 305 articles in indexed journals, 42 book chapters and edited a handbook on celiac disease. He has a h-index of 52 and his publications have been cited 11,000 times. He has been listed amongst the top two percent of research scientists globally (2021).

Professor Dr Makharia holds many important positions including being the Secretary General of the Indian Society of Gastroenterology; Chair of the Clinical Research Committee, World Gastroenterology Organization; Governing Council Member of the World Gastroenterology Organization; Council Member of the Asian Pacific Association of Gastroenterology and Coordinator of the DBT Consortium on Celiac Disease. In addition to this, he is also the co-inventor of a device for fecal incontinence and a liver biopsy needle (Bioscoop).

Professor Dr Makharia has received many awards including the BMJ South-East Asia Research Paper of the Year Award in 2016, ISG Om Prakash Memorial Award, ISG-Zydus Oration, SR Naik Memorial Award and AIIMS Excellence Awards. He has successfully organised a Young Clinician Programme for the last 11 years involving approximately 900 GI trainees and the first Train-the-Trainers programme on behalf of the Indian Society of Gastroenterology. He has initiated and participated in the development of many global, Asian and Indian practice guidelines on various diseases. His main area of research is Celiac Disease.

In terms of his personal life, Professor Dr Makharia is the loving son to Shyam Lal Makharia and Savitri Makharia and has been blessed with a lovely wife, Dr Suman Lal, who is an obstetrician and gynaecologist. They have a beautiful daughter who is also a doctor; Dr Archita Makharia. He recently expanded his family with Dr Archita's recent marriage with Dr Archit Gupta who is a GI surgeon. His interests outside medicine include travel and music.

Although his illustrious academic career is self-evident, a truly distinguishing feature of Professor Dr Makharia is his warmth, generosity and absolute dedication to patient care and teaching. His lectures have always been outstanding, and I have learned greatly from him over the years; as have a multitude of others. I cannot think of anyone more deserving to present this year's 22nd MSGH Oration; Celiac Disease: Opportunities and Challenges.

19TH PANIR CHELVAM MEMORIAL LECTURE

PROFESSOR DR JUSTIN CHE-YUEN WU

Citation by Professor Dr Lee Yeong Yeh



“Functional GI Disorders in Asia: The Past and the Future”

Dr Panir Chelvam, was known for being highly successful in his gastroenterology practice but also a caring family man and a kind friend. Professor Dr Justin Wu fits a similar personality. Having known him for several years now, and from a couple of working opportunities with him, I am greatly delighted to read his citation today.

Professor Dr Justin Wu graduated from the Chinese University of Hong Kong (CUHK) with Distinction in Medicine in 1993. He then underwent internal medicine and gastroenterology training under the supervision of Professor Dr Joseph Sung, much regarded as his close mentor and a friend. With his deep interest in GI motility, he later pursued further training at the Royal Adelaide Hospital under the supervision of Professor Dr John Dent and Professor Dr Richard Holloway in the year 2000.

Professor Dr Justin Wu joined CUHK as an Associate Professor in 2006 and was then promoted to Professor just three years later. During his tenure, he has academic and clinical focus in the field of functional GI disorder (now termed disorders of gut-brain interactions or DGBIs) and gastroesophageal reflux disease with over 300 publications in top medical journals including the New England Journal of Medicine, Lancet and Gastroenterology with H-index above 50. He is a current member of the Working Group of Chicago Classification for esophageal motility disorders.

Professor Dr Justin Wu held several key leadership positions in many local and international professional organizations. He is the current President of the Asian Pacific Association of Gastroenterology (APAGE), Past President of Hong Kong Society of Gastroenterology (HKSGE), President of APDW 2017, and the Scientific Committee Chairman of Asia Neurogastroenterology and Motility Association (ANMA). He has served as the managing director of Journal of Gastroenterology and Hepatology (JGH), and International Associate Editor of American Journal of Gastroenterology (AJG).

As the Associate Dean (Health Systems) of Faculty of Medicine and the Chairman of CUHK Medical Services, he is responsible for development of collaborative network with private health systems, businesses and industry partners in Hong Kong, Greater Bay Area and beyond. He is former Chief Operating Officer of CUHK Medical Centre, the private teaching hospital of CUHK; the founding director of Asia's first “Global Physician-Leadership Stream” (GPS) of MBChB programme; and the founding director of Hong Kong Institute of Integrative Medicine with the mission of fostering cooperation between Western and Chinese medicine in the health system.

Having a pleasant personality, it is not surprising that Professor Dr Justin Wu is an eminent teacher with eight teaching awards of medical education included the Vice-Chancellor Exemplary Teaching Award, Master Teacher, and Teacher of the Year Awards in CUHK Medicine. He has also actively contributed to the development of medical innovations in Hong Kong. He is serving as director and advisor of numerous biomedical technology companies and investment funds.

Last but not least, he is a caring father who will spend any available time out of his busy schedule with his daughter, Jasmine. There is no doubt that his success is not possible without his supportive spouse, Lily Heung. His outstanding academic achievement, exemplary leadership qualities and continuous pursuit of innovations have brought significant contributions to the field of gastroenterology. We are truly honoured to have Professor Dr Justin Wu to deliver the 19th Panir Chelvam memorial lecture.

PROGRAMME SUMMARY

Time	Date	19 th August 2022 (Friday)	20 th August 2022 (Saturday)	21 st August 2022 (Sunday)
0830 - 0900		SYMPOSIUM 1 The MSGH Consensus Statements on MAFLD	SYMPOSIUM 3 Inflammatory Bowel Disease	SYMPOSIUM 6 New Science Series 2: Joint WGO-MSGH Symposium - Green GI Practices and Planetary Health
0900 - 0930				
0930 - 1000				
1000 - 1030		LECTURE 1 22 nd MSGH Oration	LECTURE 2 19 th Panir Chelvam Memorial Lecture	LECTURE 3
1030 - 1100		Break		
1100 - 1130		Young Investigator Award 1 Best Oral Paper Presentations	SYMPOSIUM 4 Chronic Hepatitis B: New Treatment Paradigm	Tea Satellite Symposium 3
1130 - 1200				SYMPOSIUM 7 Grand Round Series 2: Overlap Functional GI Disorders
1200 - 1230				
1230 - 1300		Lunch Satellite Symposium 1	Lunch Satellite Symposium 2	CLOSING CEREMONY
1300 - 1330				
1330 - 1400		Break / Friday Prayers	Young Investigator Award 2 & Best E-Poster Award Presentations Graduation Ceremony	
1400 - 1430				
1430 - 1500		SYMPOSIUM 2 New Science Series 1: Latest Science in Gut Microbiota	SYMPOSIUM 5 Grand Round Series 1 (Joint Session with PRO-EURO DILI Network): Drug Induced Liver Injury	
1500 - 1530				
1530 - 1600				
1600 - 1630		Break		
1630 - 1700		Tea Satellite Symposium 1	Tea Satellite Symposium 2	
1700 - 1800				
1900 - 1930		OPENING CEREMONY Opening of Exhibition & Launching of MSGH Website	MSGH Annual General Meeting	
1930 - 2200		APPRECIATION DINNER FOR GUT 2022 & APDW 2021 <i>(By Invitation Only)</i>		

DAILY PROGRAMME

19th August 2022 (Friday)

Conference Hall 3

0830 - 1000

SYMPOSIUM 1 | The MSGH Consensus Statements on MAFLD

Chairpersons: *Haniza Omar / Chan Wah Kheong*

Introduction

Chan Wah Kheong (Malaysia)

Assessment and Referral Pathway for Metabolic Dysfunction Associated Liver Disease (MAFLD)

Tan Soek Siam (Malaysia)

Current and Emerging Therapy in MAFLD

Vincent Wai-Sun Wong (Hong Kong)

Improving Metabolic Outcomes in MAFLD

Chan Siew Pheng (Malaysia)

Role of Primary Care in the Management of MAFLD

Anis Safura Ramli (Malaysia)

MAFLD - A Public Health Perspective

Feisul Mustapha (Malaysia)

Q&A

1000 - 1030

LECTURE 1

22nd MSGH Oration

Citation: Ida Normiha Hilmi

Celiac Disease: Opportunities and Challenges

Govind K Makharia (India)

1030 - 1100

Break

1100 - 1230

Young Investigator Award 1

Best Oral Paper Presentations

DAILY PROGRAMME

19th August 2022 (Friday)

Conference Hall 3

1230 - 1330

Lunch Satellite Symposium 1 (Abbott)

Chairperson: *Alex Leow Hwong Ruey*

An Extensive Approach to Manage Overlapping FGID Symptoms (Virtual)

Tim Vanuytsel (Belgium)

Expert Dialogue Session: Addressing Cultural Gaps in Treating FD-GERD (Virtual)

Tim Vanuytsel (Belgium)

Q&A

1330 - 1430

Break / Friday Prayers

1430 - 1600

SYMPOSIUM 2 | New Science Series 1: Latest Science in Gut Microbiota

Chairpersons: *Mahendra Raj / Raman Muthukaruppan*

Gut Microbiota Dysbiosis in COVID-19: Epiphenomenon or a Meaningful Association?

Uday C Ghoshal (India)

Gut Microbiota in Colorectal Cancer

Wei Shu-Chen (Taiwan)

H. pylori and Gastric Cancer

Hidekazu Suzuki (Japan)

Fecal Microbiota Transplantation

David Ong Eng Hui (Singapore)

Q&A

1600 - 1630

Break

DAILY PROGRAMME

19th August 2022 (Friday)

Conference Hall 3

1630 - 1800

Tea Satellite Symposium 1

Chairperson: *Goh Khean Lee*

The Evolving Face of Reflux-Like Symptoms & Its Management (**Reckitt**)

Peter James Kahrilas (United States)

Chairperson: *Goh Khean Lee*

The Latest ACG Clinical Guideline for Diagnosis and Management of GERD (**AstraZeneca**)

Lawrence Ho Khek Yu (Singapore)

Chairpersons: *Ida Normiha Hilmi / Lee Yeong Yeh*

IBD Monitoring Reimagined: Innovation in IBD Care (Ferring)

Alex Leow Hwong Ruey (Malaysia)

1900 - 1930

OPENING CEREMONY

Exhibition Hall

- Opening of Exhibition

- Launching of MSGH Website

- IBD Preceptorship & IBD App

1930 - 2200

APPRECIATION DINNER FOR GUT 2022 & APDW 2021 (*By Invitation Only*)

Mandarin Oriental Hotel

DAILY PROGRAMME

20th August 2022 (Saturday)

Conference Hall 3

0830 - 1000

SYMPOSIUM 3 | Inflammatory Bowel Disease

Chairpersons: *Ida Normiha Hilmi / Raman Muthukaruppan*

COVID19 and IBD - What have we Learned so Far?

Gilaad G Kaplan (Canada)

Isolated Ileocecal Crohn's Disease: Is it Time to Swing the Pendulum Back to Surgery?

Yes: *Khong Tak Loon (Malaysia)*

No: *Govind K Makharia (India)*

Case 1: How to Position Small Molecules and Biologics in IBD?

Nazri Mustaffa (Malaysia)

Case 2: Management of Acute Severe Colitis

Nik Razima Wan Ibrahim (Malaysia)

Q&A

1000 - 1030

LECTURE 2

19th Panir Chelvam Memorial Lecture

Citation: *Lee Yeong Yeh*

Functional GI Disorders in Asia: The Past and the Future

Justin Che-Yuen Wu (Hong Kong)

1030 - 1100

Break

1100 - 1230

SYMPOSIUM 4 | Chronic Hepatitis B: New Treatment Paradigm

Chairpersons: *Haniza Omar / Sattian Kollanthavelu*

Can we do More with Current HBV Treatment with Nucleoside Analogues?

Vincent Wai-Sun Wong (Hong Kong)

Debatable Among Global Hepatitis B Guidelines: How do we Manage Patients?

Teerha Piratvisuth (Thailand)

An Overview of Emerging Therapies for Functional Cure

Lim Seng Gee (Singapore)

Asian Pacific Association for the Study of Liver (APASL) Guidelines: Hepatitis B Virus in Pregnancy

Manoj Kumar Sharma (India)

Q&A

DAILY PROGRAMME

20th August 2022 (Saturday)

Conference Hall 3

1230 - 1330

Lunch Satellite Symposium 2 (Takeda)

Chairperson: *Raja Affendi Raja Ali*

Are we doing Enough in Treating GERD?

Daphne Ang Shih Wen (Singapore)

Paving the Way Towards Disease Modification in Crohn's Disease

Wei Shu-Chen (Taiwan)

Q&A

1330 - 1430

Young Investigator Award 2 & Best E-Poster Award Presentations Graduation Ceremony

1430 - 1600

SYMPOSIUM 5 | Grand Round Series 1 (Joint Session with PRO-EURO DILI Network): Drug Induced Liver Injury

Chairpersons: *Tan Soek Siam / Jayaram Menon*

Introduction to PRO-EURO-DILI Network

Raul J Andrade (Spain)

Approach and Management of DILI in Real-Life Practice - The Asian Experience

Harshad Devarbhavi (India)

Approach and Management of DILI in Real-Life Practice - The European Experience

Raul J Andrade (Spain)

Case 1: COVID-19 Vaccine Induced Liver Injury

Hoo Chai Zhen (Malaysia)

Case 2: Immunotherapy-Associated Liver Injury

Raul J Andrade (Spain)

Q&A

1600 - 1630

Break

DAILY PROGRAMME

20th August 2022 (Saturday)

Conference Hall 3

1630 - 1800

Tea Satellite Symposium 2

Chairperson: *Lee Yeong Yeh*

The Impact of Antibiotics on the Gut Microbiota and Role of Probiotic (**Servier**)

Kok-Ann Gwee (Singapore)

Chairperson: *Lee Yeong Yeh*

Define and Optimize the Role of Lenvatinib in HCC Management (**Eisai**)

Teerha Piratvisuth (Thailand)

Chairperson: *Chan Wah Kheong*

Mounting Evidence with Immunotherapy in Unresectable HCC (**Roche**)

Lim Seng Gee (Singapore)

1800 - 1900

MSGH Annual General Meeting

DAILY PROGRAMME

21st August 2022 (Sunday)

Conference Hall 3

0830 - 1000

SYMPOSIUM 6 | *New Science Series 2: Joint WGO-MSGH Symposium - Green GI Practices and Planetary Health*

Chairpersons: *Jayaram Menon / Abraham Mathew George*

The Global Gastroenterology Community to Meet the Challenge of Climate Change
Geoffrey Metz (Australia)

Discussion Forum:

Chairperson: *Abraham Mathew George*

Moderators: *Jayaram Menon / Raja Affendi Raja Ali*

Green Endoscopy

Andrew Veitch (United Kingdom)

GI Society Survey

Desmond Leddin (Canada)

GI Carbon Footprint

Geoffrey Metz (Australia)

Moving Forward

Bishr Omary

Discussion / Q&A

1000 - 1030

LECTURE 3 (*Johnson & Johnson*)

Chairperson: *Raja Affendi Raja Ali*

Stages of Global Evolution of Inflammatory Bowel Disease

Gilaad G Kaplan (Canada)

1030 - 1100

Break

1100 - 1130

Tea Satellite Symposium 3 (*Johnson & Johnson*)

Chairperson: *Abraham Mathew George*

Real World Effectiveness and Safety of Ustekinumab in IBD

Ooi Choon Jin (Singapore)

DAILY PROGRAMME

21st August 2022 (Sunday)

Conference Hall 3

1130 - 1300

SYMPOSIUM 7 | Grand Round Series 2: Overlap Functional GI Disorders

Chairpersons: *Soon Su Yang / Lee Yeong Yeh*

How do I Approach Overlap Functional GI Disorders in Practice?

Justin Che-Yuen Wu (Hong Kong)

Case 1: FD-GERD

Hidekazu Suzuki (Japan)

Case 2: FD-IBS

Kok-Ann Gwee (Singapore)

Case 3: FD-Pancreatic Dysfunction

Seiji Futagami (Japan)

Case 4: FD-Constipation

Uday C Ghoshal (India)

Q&A

1300 - 1330

CLOSING CEREMONY

- Award Presentation

- Lucky Draw

MODERATORS / CHAIRPERSONS

Abraham Matthew George

KPJ Johor Specialist Hospital
Johor

Chan Wah Kheong

University Malaya Medical Centre
Kuala Lumpur

Goh Khean Lee

Universiti Malaya and CENGILD Medical Centre
Kuala Lumpur

Haniza Omar

Selayang Hospital
Selangor

Ida Normiha Hilmi

University Malaya Medical Centre
Kuala Lumpur

Jayaram Menon

Pantai Hospital Ayer Keroh
Melaka

Lee Yeong Yeh

Hospital Universiti Sains Malaysia
Kubang Kerian, Kelantan

Alex Leow Hwong Ruey

Pantai Hospital Kuala Lumpur
Kuala Lumpur

Mahendra Raj

Pantai Hospital Kuala Lumpur
Kuala Lumpur

Raja Affendi Raja Ali

Universiti Kebangsaan Malaysia Medical Centre
Kuala Lumpur

Raman Muthukaruppan

Hospital Queen Elizabeth
Kota Kinabalu, Sabah

Sattian Kollanthavelu

Tuanku Ja'afar Hospital Seremban
Negeri Sembilan

Soon Su Yang

KPJ Kuching Specialist Hospital
Sarawak

Tan Soek Siam

Selayang Hospital
Selangor

IMPACT OF EARLY VERSUS LATE USE OF BIOLOGIC THERAPY ON CUMULATIVE SURGICAL RATES IN PATIENTS WITH IBD

Mohd Fairul¹, Nik Arsyad Affendi², Shahreedhan Shahrani¹, Xin Hui Khoo¹, Ida Normiha Hilmi¹

¹Department of Medicine, University Malaya Medical Centre, Kuala Lumpur, Malaysia

²Department of Medicine, International Islamic University Malaya, Kuantan, Malaysia

OBJECTIVE: A treat-to-target therapy in IBD by the early initiation of biologic therapy may impact disease progression and avoidance of surgical-related events. This study aims to identify differences in surgical rates between patients who received early versus late biologic therapy.

METHODOLOGY: This was a retrospective study from the UMMC IBD database from January 2009 until January 2022. All biologic experienced patients were included. The time of IBD diagnosis, the time of initiation of biologic therapy from disease onset, the duration of biologic therapy and the time to surgery were collected. Kaplan-Meier curve was used to determine the surgical survival rate with a significant p-value < 0.05.

RESULTS: The study included 100 patients bionative patients with Crohn's disease of which n=34, 34% had penetrating and/or stricturing disease and (n=66, 66%) had non-stricturing non-penetrating disease Patients received Infliximab (n=57, 57%), Ustekinumab (n=16, 16%), Vedolizumab (n=17, 17%) and Adalimumab (n=10, 10%).

However, 14% patients had a diagnosis of IBD post-surgery. 69.4% (n=52) patients received early biologic therapy (<2 years from diagnosis) and 39.6% (n=34) patients received late biologic therapy.

Cumulative survival surgical rates at 1, 3 and 5 years in the early biologic group were 95%, 90% and 80% (p=0.382) and 85%, 80% and 75% in the late biologic group.

CONCLUSION: Although the overall surgical rates were low in patients on biologic therapy, our study failed to show that early biologic therapy had lower cumulative surgical rates probably due to small numbers.

FLOOR PLAN

CONFERENCE HALL 2

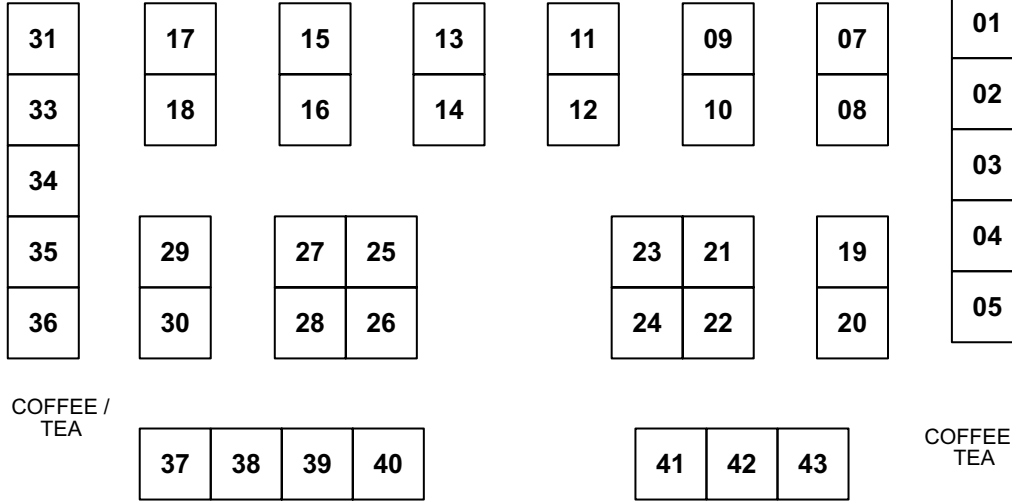
CONFERENCE HALL 1

ENTRANCE / EXIT

ENTRANCE / EXIT

REGISTRATION

Exhibition Hall



loading for
conference 2

loading for
conference 2

TRADE EXHIBITION

BOOTH NO	COMPANY
01	First Pharmaceutical Sdn Bhd
02	Olympus (M) Sdn Bhd
03	Grifols Malaysia Sdn Bhd
04	Hovid Berhad
05	Medic Pro Healthcare Sdn Bhd
07 & 08	Roche (M) Sdn Bhd
09 & 10	Ferring Sdn Bhd
11 & 12	Johnson & Johnson Sdn Bhd
13 & 14	Eisai (M) Sdn Bhd
15 & 16	AstraZeneca Sdn Bhd
17	Sun Pharma Company
18	EP Plus Group Sdn Bhd
19	AI Medical Service Inc
20	United Italian Trading (M) Sdn Bhd

BOOTH NO	COMPANY
21, 22, 23 & 24	Takeda (M) Sdn Bhd
25, 26, 27, & 28	Abbott Laboratories Sdn Bhd
29	Abbvie Sdn Bhd
30	Medi-Life (M) Sdn Bhd
31	SYS Healthcare Sdn Bhd
33	WellmedicHealthcare Sdn Bhd
34	Brego Life Sciences Sdn Bhd
35 & 36	Mylan Healthcare Sdn Bhd
37	Kotra Pharma
38	Boston Scientific (M) Sdn Bhd
39 & 40	Servier Malaysia Sdn Bhd
41	RB (Health) Malaysia Sdn Bhd
42	MiRXES Pte Ltd
43	DCH Auriga Sdn Bhd

ACKNOWLEDGEMENTS

The Organising Committee of the GUT 2022 would like to express its appreciation to the following for their support and contributions:

PLATINUM SPONSORS



Abbott

Abbott Laboratories
Sdn Bhd



Takeda (M) Sdn Bhd

GOLD SPONSORS



Eisai (M) Sdn Bhd



AstraZeneca Sdn Bhd



Ferring Sdn Bhd



Johnson & Johnson Sdn Bhd



RB (Health) Malaysia
Sdn Bhd



Roche (M) Sdn Bhd



Servier Malaysia Sdn Bhd

ACKNOWLEDGEMENTS

SILVER SPONSORS

abbvie
Abbvie Sdn Bhd

AIM
AI Medical Service Inc

Boston Scientific
Advancing science for life™
Boston Scientific (M)
Sdn Bhd

BREGO
Brego Life Sciences
Sdn Bhd

DCH AURIGA
DCH Auriga Sdn Bhd

ep+
Healthcare Group
Innovating for Better Lives
EP Plus Group
Sdn Bhd

first
PHARMACEUTICAL
First Pharmaceutical
Sdn Bhd

GRIFOLS
Grifols Malaysia
Sdn Bhd

hovid
Hovid Berhad

KOTRA PHARMA
Kotra Pharma

medi-life
When Quality Healthcare Matters
Medi-Life (M)
Sdn Bhd

MEDIC PRO
HEALTHCARE
Medic Pro Healthcare
Sdn Bhd

mirxes
TO KNOW. TO ACT.
MiRXES Pte Ltd

Mylan
Mylan Healthcare
Sdn Bhd

OLYMPUS
Olympus (M) Sdn Bhd

SUN PHARMA
Sun Pharma Company

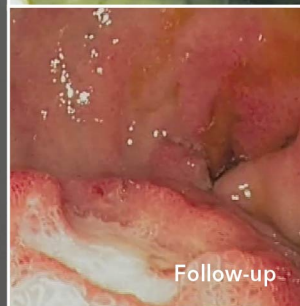
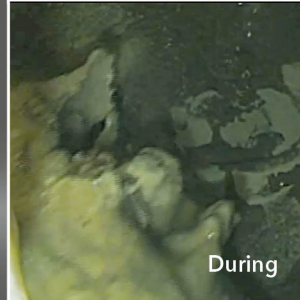
CREO MEDICAL • **SYS HEALTHCARE**
SYS Healthcare Sdn Bhd

UITM
UNITED ITALIAN TRADING (M) SDN BHD
United Italian Trading
(M) Sdn Bhd

WELLMedic
WELLMEDIC HEALTHCARE SDN BHD
Wellmedic Healthcare
Sdn Bhd

A different approach to hemostasis.

COOK



Hemospray[®]
ENDOSCOPIC HEMOSTAT



For more information on Hemospray, visit:
hemospray.cookmedical.com

Registered under Act 737
Registration Number: GB475001118818



Duodenal ulcer bleed images courtesy of Dr. Lars Karlsen,
Stavanger University Hospital, Stavanger, Norway.