

[×](#)



[no ads](#)



- [Log in](#)
- [Sign up](#)

{\"url\":\"/signup-modal-props.json?lang=gb\u0026email=\"}

## Sign up

Enter your email and create a password for your account

Email\*

Password\*

Show password

[Privacy](#) - [Terms](#)

Must contain:

- at least 8 characters
- 1 uppercase letter, 1 lowercase letter, 1 number

Next Step

Step 1 of 4

[Articles](#)[Cases](#)[Courses](#)[Quiz](#)

[About](#)[Blog](#)[Go ad-free](#)

Search Radiopaedia.org

Search

# Quadriceps fat pad impingement syndrome

Case contributed by [Dr Mohd Radhwan Bin Abidin](#)

Diagnosis almost certain

Diagnosis almost certain

## Presentation

Chronic left knee pain. No history of trauma.

## Patient Data

**Age:** 30 years

**Gender:** Female

**From the case:** [Quadriceps fat pad impingement syndrome](#)

MRI



[Sagittal T2](#)

**From the case:** [Quadriceps fat pad impingement syndrome](#)

MRI

Sagittal T2

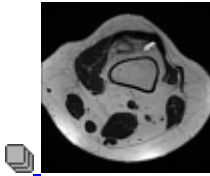


[Sagittal PD fat sat](#)

**From the case:** [Quadriceps fat pad impingement syndrome](#)

MRI

Sagittal PD fat sat



[Axial T2](#)

**From the case:** [Quadriceps fat pad impingement syndrome](#)

MRI

Axial T2

MRI

Sagittal T2

The quadriceps (anterior suprapatella) fat pad is enlarged and shows heterogenous hyperintense on T2W and PDFS. Posterior suprapatella fat pad is slightly compressed however shows normal signal.

The quadriceps tendon is normal. The patella is also normal. Minimal knee joint fluid.

## Case Discussion

[Privacy](#) - [Terms](#)

The imaging findings shows oedematous changes with convex posterior surface of the quadriceps (anterior suprapatella) fat pad.

Quadriceps fat pad impingement syndrome is a rare cause of knee pain and maybe incidental finding.

## 1 article features images from this case

- [Quadriceps fat pad impingement syndrome](#)

## 0 public playlists includes this case

## Related Radiopaedia articles

- [Quadriceps fat pad impingement syndrome](#)

## Promoted articles (advertising)

Spontaneous bilateral quadriceps tendon rupture in a patient with renal failure  
Varaprasad Naga Vemuri et al., Case Rep, 2018

Picture of the Month—Diagnosis  
JAMA Pediatrics, 2008

Post-traumatic bony impingement into vagina: a rare cause of urethrovaginal fistula  
Ajay Aggarwal et al., Case Rep, 2018

Treatment of patella tendinopathy by distalising tibial tubercle osteotomy  
Michael J Dan et al., Case Rep, 2019

CLINICAL SPECTROSCOPY: ADVANTAGES AND PHYSICAL PRINCIPLES OF THE SPECTROGRAPH AND TECHNIC IN TAKING SPECIMEN FOR BIOSPECTROMETRIC ANALYSIS  
L. EDWARD GAUL et al., JAMA Dermatology, 1935

Therapies after first-line afatinib in patients with EGFRm+ NSCLC in Japan: retrospective analysis of LUX-Lung 3  
Hiroshige Yoshioka et al, Future Medicine, 2020

---

Powered by **TREND MD**

[PlayAdd to Share](#)

- [View revision history](#)
- [Report problem with Case](#)
- [Contact user](#)

Case

Full screen case

Case with hidden diagnosis

Full screen case with hidden diagnosis

Privacy - Terms

- [+ add to new playlist](#)

## Case information

**rID:** 78690

**Published:** 9th Jun 2020

**Last edited:** 9th Jun 2020

**System:** [Musculoskeletal](#)

**Inclusion in quiz mode:** Included

**Institution:** International Islamic University Malaysia

[Support Radiopaedia](#) and see fewer ads

## FEATURED VIDEOS

10 Sec

## Spinal Fusion

An animation that shows how a spinal fusion procedure is performed and that a piece of the pelvis is what is used to fuse the vertebrae.

## [Encyclopaedia](#)

### By Section:

- [Anatomy](#)
- [Approach](#)
- [Artificial Intelligence](#)
- [Classifications](#)
- [Gamuts](#)
- [Imaging Technology](#)
- [Interventional Radiology](#)
- [Mnemonics](#)
- [Pathology](#)
- [Radiography](#)
- [Signs](#)
- [Staging](#)
- [Syndromes](#)

### By System:

- [Breast](#)
- [Cardiac](#)
- [Central Nervous System](#)
- [Chest](#)
- [Forensic](#)
- [Gastrointestinal](#)
- [Gynaecology](#)
- [Haematology](#)
- [Head & Neck](#)
- [Hepatobiliary](#)
  
- [Interventional](#)
- [Musculoskeletal](#)
- [Obstetrics](#)
- [Oncology](#)
- [Paediatrics](#)

- [Spine](#)
- [Trauma](#)
- [Urogenital](#)
- [Vascular](#)
- [Not Applicable](#)

## [Patient Cases](#)

- [Breast](#)
- [Cardiac](#)
- [Central Nervous System](#)
- [Chest](#)
- [Forensic](#)
- [Gastrointestinal](#)
- [Gynaecology](#)
- [Haematology](#)
- [Head & Neck](#)
- [Hepatobiliary](#)
  
- [Interventional](#)
- [Musculoskeletal](#)
- [Obstetrics](#)
- [Oncology](#)
- [Paediatrics](#)
- [Spine](#)
- [Trauma](#)
- [Urogenital](#)
- [Vascular](#)
- [Not Applicable](#)

## [Radiopaedia.org](#)

- [About](#)
- [Blog](#)
- [Feature Sponsor](#)
- [Donate](#)
- [Editors](#)
- [Expert advisers](#)
- [Help](#)



• [Facebook](#)



• [Twitter](#)



• [Newsletter](#)

[Contact Us](#)

[Terms of Use](#)

[Privacy Policy](#)

[Licensing](#)

[Sponsorship](#)

[Developers](#)

Updating... Please wait.



Unable to process the form. Check for errors and try again.



Thank you for updating your details.

© 2005–2020 Radiopaedia.org

Accept

This site is for use by [medical professionals](#). To continue you must accept our [use of cookies](#) and the site's [Terms of Use](#).