



DESIGN IDEALS

Volume 1 | Issue 1 | 2019

Design Ideals

VOLUME 1 | ISSUE 1 | 2019

EDITOR-IN-CHIEF

Mansor Ibrahim (Professor. TPr. Dr.)
International Islamic University Malaysia

ADVISOR

Abdul Razak Sopian (Professor. Ar. Dr.)
International Islamic University Malaysia

SECRETARIAT

Mohamad Saiful Nizam Mohd. Suhaimi (Dr.)
International Islamic University Malaysia

EDITORIAL BOARD

Norwina Mohd Nawawi (Assoc. Professor.Ar. Dr.)
International Islamic University Malaysia

Ismail Jasmani
International Islamic University Malaysia

Noor Suzilawati Rabe (Dr.)
International Islamic University Malaysia

Syakir Amir Ab Rahman (Dr.)
International Islamic University Malaysia

Mazlina Mansor (Dr.)
International Islamic University Malaysia

Haza Hanurhaza Md Jani (Dr.)
International Islamic University Malaysia

Julaila Abdul Rahman (Dr.)
International Islamic University Malaysia

Arita Hanim Awang (TS.Dr.)
International Islamic University Malaysia

Zeenat Begam Yusof (Dr.)
International Islamic University Malaysia

Norhanis Diyana Nizarudin (LAr. Dr.)
International Islamic University Malaysia

CONTENTS

Preface	4
Editorial	
Article 1 Ablution Furniture for Multiple User (AFME)	7
Julaila Abdul Rahman, Zumahiran Kamarudin & Mohd Azim Mohd Khairi	
Article 2 Shari'ah Compliant Healthcare Centre	11
Ismail Jasmani, Mohd Izzat Amir Zakaria & Julaila Abdul Rahman	
Article 3 Housing for 3 Generation with Application of Universal Design (Sentul, Kuala Lumpur)	15
Abdullah Husin Al Jazri & Asiah Abdul Rahim	
Article 4 Urban Masjid : The Heart and Soul of Johor Bahru (Masjid Al-Attas)	19
Muhammad Azmeer Muhammad & Noor Hanita Abdul Majid	
Article 5 Jinjang Flowland- A Multi Phase Designed for Deepening Journey towards Nature Remedy	23
Nur 'Ezzati Adnan & Zainul Mukrim Baharuddin	
Article 6 Linear Loci - Reviving Nature Impulse at Jalan Raja Chulan	27
Nor Hidayah Ramlan, Nurhayati Abdul Malek & Ismawi Zen	
Article 7 F-Bie' Edge Jetty - Special Area Plan (SAP) for Klang Royal Town, Selangor	31
Nur Lli Izyani Muhamad, M.Zainora Asmawi & Wan Ramlah Wan Mohamad	
Article 8 Pasar Jawa - Special Area Plan (SAP) for Klang Royal Town, Selangor	35
Wan Ramlah Wan Muhamad, M. Zainora Asmawi & Nur Lli Izyani Muhamad	

04

URBAN MASJID : THE HEART AND SOUL OF JOHOR BAHRU (MASJID AL-ATTAS)

Muhammad Azmeer Muhammad & Noor Hanita Abdul Majid
Department of Architecture, Kulliyah of Architecture & Environmental Design, IIUM



ABSTRACT

Urban Masjid is a new concept that will give more space and facilities to tackle current situation faced by Muslim who lives in a city area. This concept is proposed to be implemented in Masjid Al Attas in Johor Bahru, Malaysia to enhance the Masjid spaces and its functions, as well as to serve the architectural and social needs.

INTRODUCTION

Masjid Al Attas is located at the city of Johor Bahru, Malaysia. Johor Bahru is the central business district and the state capital of Johor. The city is Malaysia's 'Southern Gate Gateway' that receives 60% of foreign tourists. The site for the masjid is at the corner of Jalan Wong Ah Fook and Jalan Gereja. On the site is

the 'old Al-Attas' masjid that is currently inadequate in terms of space and facilities to accommodate the needs of the people. Hence, there is a dire need to provide an adept facility to tackle the present situation. The masjid is sited in a high density area that is surrounded by high-rised buildings with heavy traffic on the adjacent roads. The people in the surrounding are multiracial with multicultural values conducting economic activities such as financial services, commerce and retail, arts and culture, and hospitality. The development of the masjid aims to serve the architectural and social needs. The facilities provided by the masjid will accommodate the functions of ibadah, recreational centre, educational, economic, welfare and security.

The conceptual idea for the masjid is inducted from sentence 109 in Surah Yusuf. The keywords are extracted from the Ayah are REVELATION + EXPLORATION + NATURE + UNITY + SACRED

“And We sent not before you (as messengers) except men to whom We revealed from among the people of cities. So have they not travelled through the earth and observed how was the end of those before them? And the home of the Hereafter is best for those who fear Allah; then will you not reason?” (12:109)

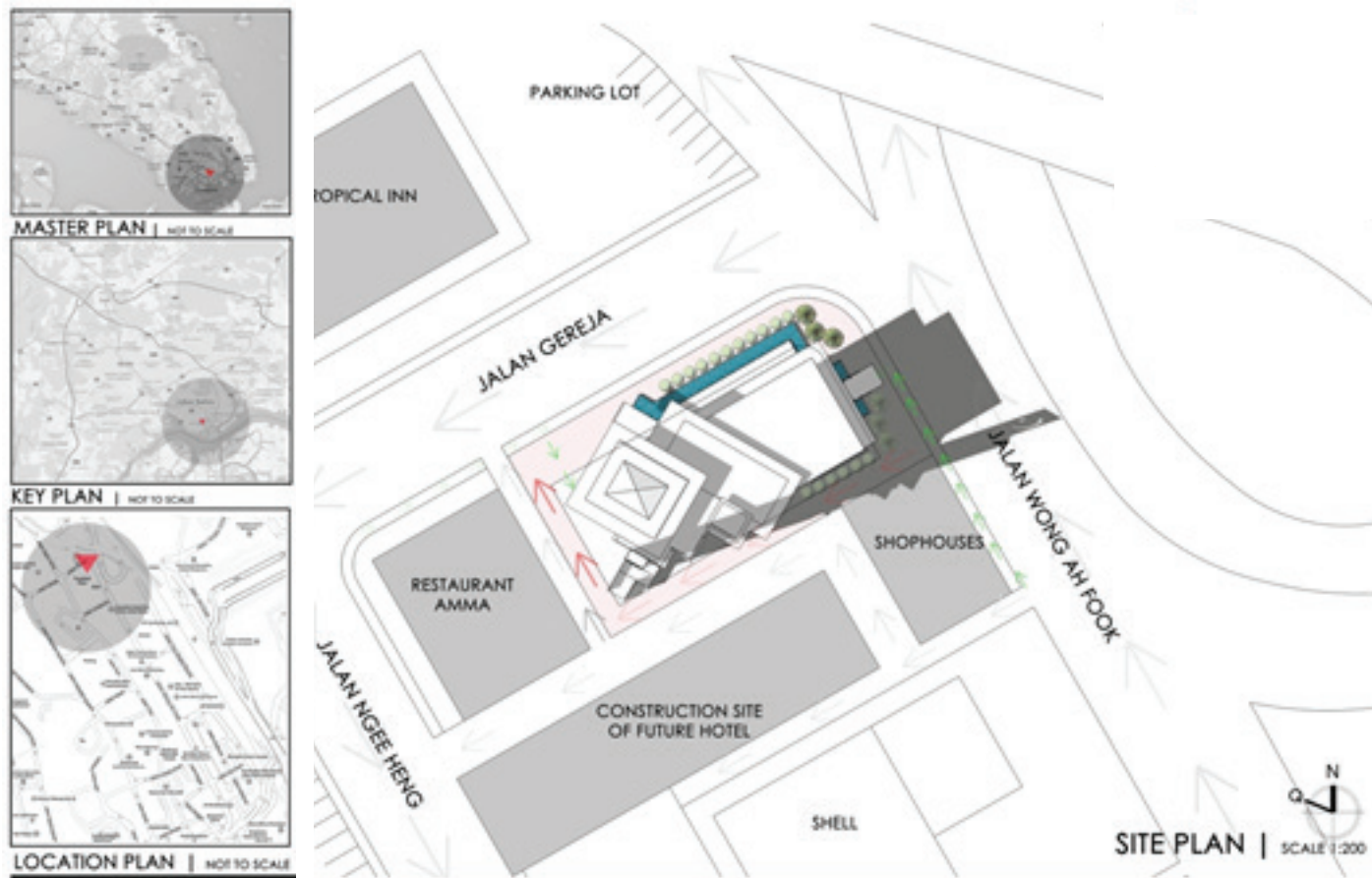


Figure 1 Site Plan



Figure 2 Floor Plan



Figure 3 Ground Floor Plan

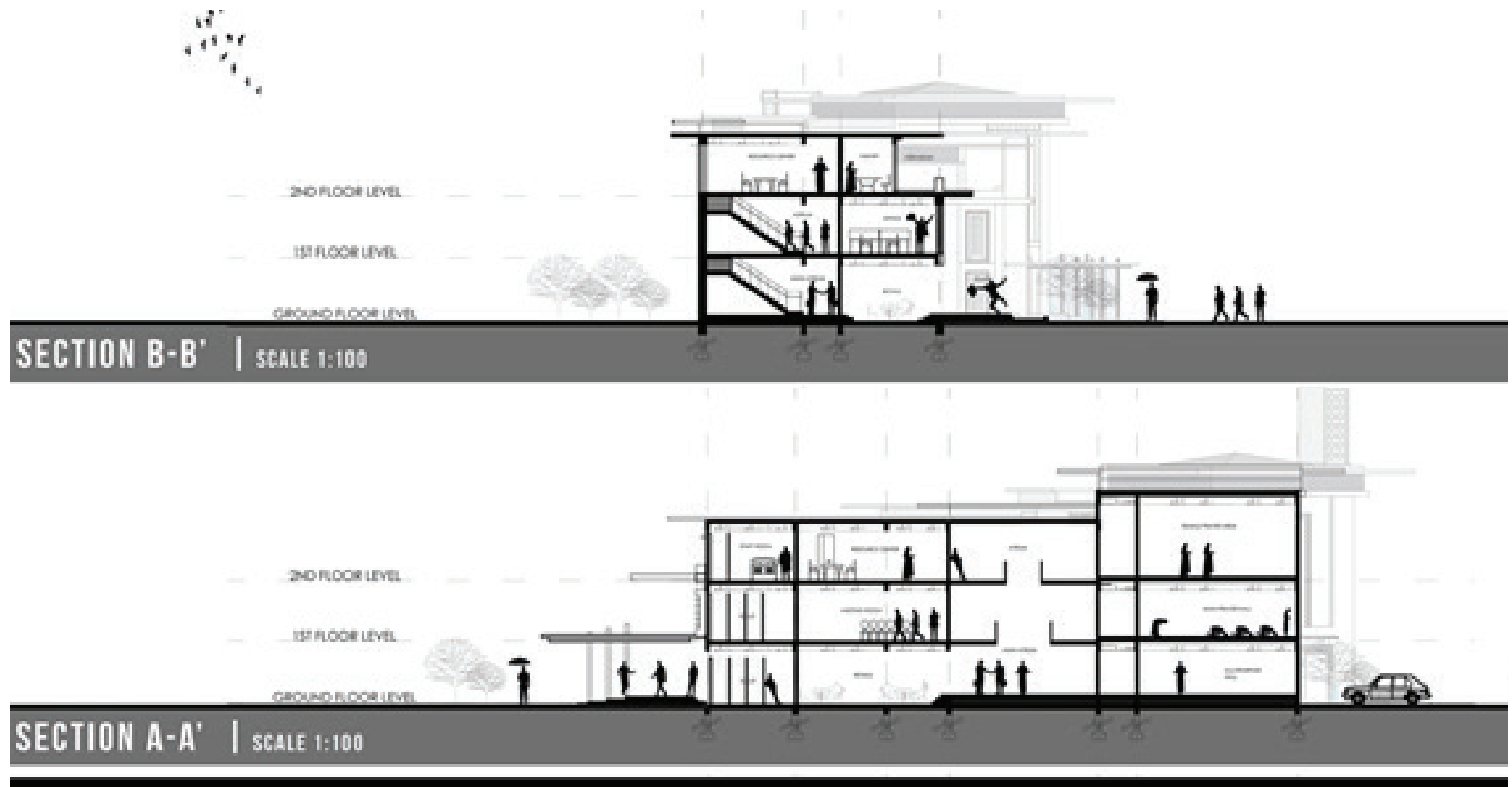


Figure 4 Section A-A' and B-B'

CONCLUSION

The masjid will be a place of REVELATION in realising the concept of '*hablunminallah*' and understanding the duty of oneself as a khalifah; EXPLORATION in search of the meaning of Islam; incorporating the element of NATURE and gain advantages through sustainable strategies; creating and providing spaces for people to interact in UNITY and above all emanating the spiritual sense of SACREDness of Islam as the true religion. The masjid will bring people from the surrounding areas; especially people who are travelling and working and accommodate their necessities.

The design approach is simple with a basic play of geometrical shapes. The utilization of simple forms in the design symbolized the humbleness and submission towards the Creator. Square as a simple and pure form is the perfect form to convey the purity of faith. Even in the earliest mosques the shape of the building based on the square or a regular planning from where everything is seen as equal since we are equal in the eyes of Allah. The prayer hall is rotated from the based grid toward the direction of the Qiblat creating a hierarchy of the overall planning.

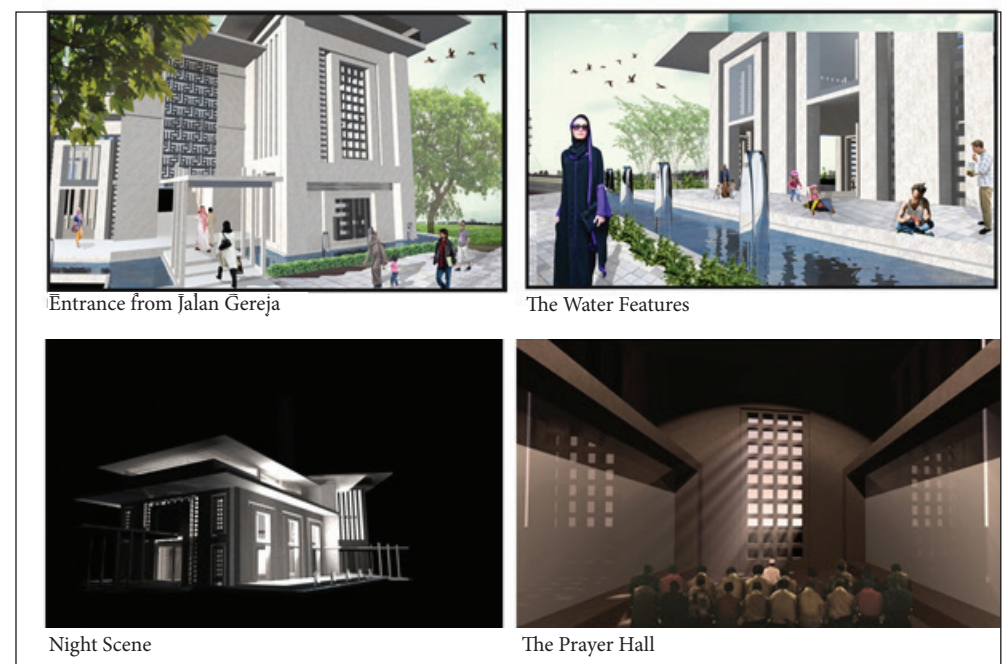


Figure 5 Proposal of Areas at the Masjid Al Attas

REFERENCES

- Omar, S. S., Ilias, N. H., Teh, M. Z., & Borhan, R. (2018). Green Mosque: A Living Nexus. *Environment-Behaviour Proceedings Journal*, 3(7), 53-63.
- Rahman, U. N. S. U. A., Kamarudin, K. H., Faheem, I., & Ahmed, M. (2017). SD 14-Revitalization Of The Role Of Mosque As Node In Urban Area. *Sustain-Able And Resilient Cities: The Way Forward*, 21.



Figure 6 & 7 Perspective Views