

# STEdex '11

SUSTAINABLE TROPICAL ENVIRONMENTAL DESIGN EXHIBITION

Volume 3 : 2011 ISSN 2180-0685

**Editors-in-Chief**

Nasir Baharuddin

Rahimah Ibrahim

Norsidah Ujang



Universiti Putra Malaysia Press  
[www.upm.edu.my](http://www.upm.edu.my)

---

©2011 Universiti Putra Malaysia Press  
Print 2011

All rights reserved. No part of this book may be reproduced in any form without written permission from the publisher, except by a reviewer who wishes to quote brief passages in a review written for inclusion in magazines or newspapers.

Perpustakaan Negara Malaysia  
Cataloguing-in-Publication Data

This Catalogue is published in conjunction with:  
**STEdex '11 : Sustainable Tropical Environmental Design Exhibition held at Serdang Gallery, Faculty of Design and Architecture, Universiti Putra Malaysia on 18 January- 31 April 2012**  
Tropical Environment  
Design Studio  
Sustainable Product Design  
Environmental Design  
Sustainability

Volume 3: 2011. ISSN 2180-0685

All views expressed in this book are those of the authors and do not necessarily reflect the views of the Faculty or the University.

Type face : Avant Garde  
Text font size : 10/11

**Published by:**  
Universiti Putra Malaysia Press  
Universiti Putra Malaysia  
43400 Serdang  
Selangor, Malaysia  
[www.upm.edu.my](http://www.upm.edu.my)

**Printed by:**  
Perceetakan Mesbah Sdn Bhd  
No. 11, Jln Tun Perak 6  
Taman Tun Perak  
43200 Cheras  
Selangor Darul Ehsan  
Tel.: 03-91056473  
Fax: 03-91056469

**Indexed in:**  
Design and Applied Arts Index  
Virtual Library Museum Pages

---

# Editorial Board

## Editors-in-Chief

Nasir Baharuddin  
Rahinah Ibrahim  
Norsidah Ujang

## Editorial Board Members

Meor Mohammad Fared Meor Razali  
Abd Aziz Othman  
Nor Atiah Ismail  
Rizal Rahman  
Mohammad Yazah Raschid  
Mohd Johari Mohd Yusof  
Raja Ahmad Azmeer Raja Ahmad Effendi  
Nur Dalilah Dahlan

## Reviewers

Faridah Adnan  
Jasmeel Sidhu  
Norhati Ibrahim  
Syed Sobri Syed Ismail  
Anuar Mohd Noor  
Phua Chin Eng  
Hasanudin Lamit  
Nik Malik Zainal Abidin  
Khairina Zek Khairuddin  
Mohd Ramzi Mohd. Hussain  
Lee Wern Ching  
Mohd Firdaus Shuib  
Baharudin Ujang

**Art & Creative Direction**  
Nasir Baharuddin

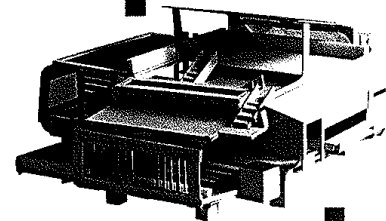
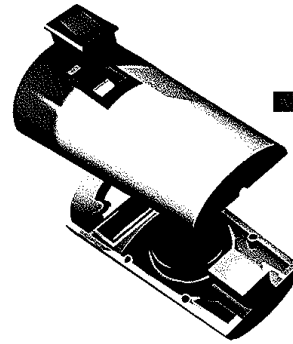
**Text Direction**  
Rahinah Ibrahim

**Language Direction**  
Kamsuri Ibrahim

**Production Manager**  
Zaidi Zulkifli

**DTP Layout Designer**  
Intan Shakinah Khalid

**DTP Designer**  
Fatihah Sapran



# 13 The Scale of Nature

Mohd Nazri Saidon & Abd Aziz Othman

## Jury Review

Mohd Ramzi Mohd Hussain & Lee Wern Ching

## Green Camping

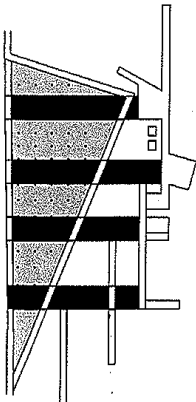
Mohd Nazri Saidon & Abd Aziz Othman

## Mangrove Nostalgia

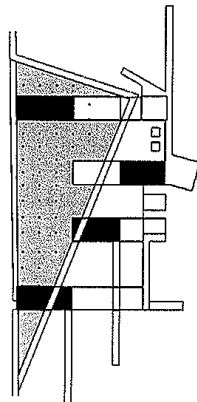
Mohd Nazri Saidon & Abd Aziz Othman

## Tanjung Piai Inter-vocation Destination

Mohd Nazri Saidon & Abd Aziz Othman



transition added



New environment

# Jury Review

Mohd Ramzi Mohd Hussain & Lee Wern Ching.

The 'Scale of Nature' focuses on the ecological landscape design of Tanjung Piai National Park, Johor, Malaysia. Three different objectives and approaches have been selected namely: The Landscape Design for Camping Site, Tanjung Piai: Prelude and Nostalgia, and Tanjung Piai Inter-vocation Destination.

**The Landscape Design for Camping Site:** This project begins with the landscape design for camping site. The project shows a crucial and important aspect of landscape design even though it is relatively small in scale. It portrays a unique and challenging idea in providing different types of experiences in nature. The design approach is to respond to the natural characteristics of the site by encouraging exploration of natural beauty as well as creating the habitat for wildlife. The concept is well-illustrated to explain the design process intelligently. The idea of having elevated camp sites in mangrove community shows the designer's concern for natural habitat that must be protected for biodiversity. However, we would expect a more dispersed camp site for space 'breathing' instead of one with the camping spots huddled closely together. The proposed straight entrance walkway cutting into the site is seemed inappropriate in a natural setting. More intimate walkways that bend and wrap around the mangrove trees is more logical. Overall, this project demonstrates the genuine idea and credible attempt in designing landscape of sensitive area.

**The Tanjung Piai: Prelude and Nostalgia:** This second project shows a strong justification and well-defined conceptual design. The concept diagrams clearly illustrate the design ideas and space interpretation based on the ecological design theory and philosophy. The good intention, however, is on the detailed method to protect the shorelines and revitalizes the site for sustainability. In doing this, the designer wisely introduces new buildings within the mangrove forest. It is a normal challenge in landscape design to materialize structures in natural eco-system. In general, the project demonstrates the matured and creative ideas in dealing with sensitive area of mangrove.

**Tanjung Piai Inter-Vocation Destination:** This third project proposes an interpretive trail in the mangrove area. It shows a good approach in conserving the mangrove forest and ecosystem. Understanding ecological aspects such as soil series, vegetation (mangrove species, ecosystem etc.) lead to the best conception of landscape design solution and approach of sensitive site. Here, the application of layering technique as it was first introduced by Ian McHarg (1969), clearly describes the principles used in searching the best design solution. Thus, the landscape master plan gives more impact in treating the sensitive issues. Credit is given to the designer for showing a thorough site analysis and clear illustrations of the design process. In general, the project is able to deliver what elements should be considered in designing the natural landscape for sustainability.