



الجامعة الإسلامية العالمية ماليزيا  
INTERNATIONAL ISLAMIC UNIVERSITY MALAYSIA  
يُؤَيِّدُ رَيْسُ الْإِسْلَامِ: أَيْمَانُ أَبِي بَكْرٍ مَلِكُ الْمَلَيْسِيَا

# IRIIE 2010 Research, Innovation & Invention Exhibition 2010 (IRIIE 2010)

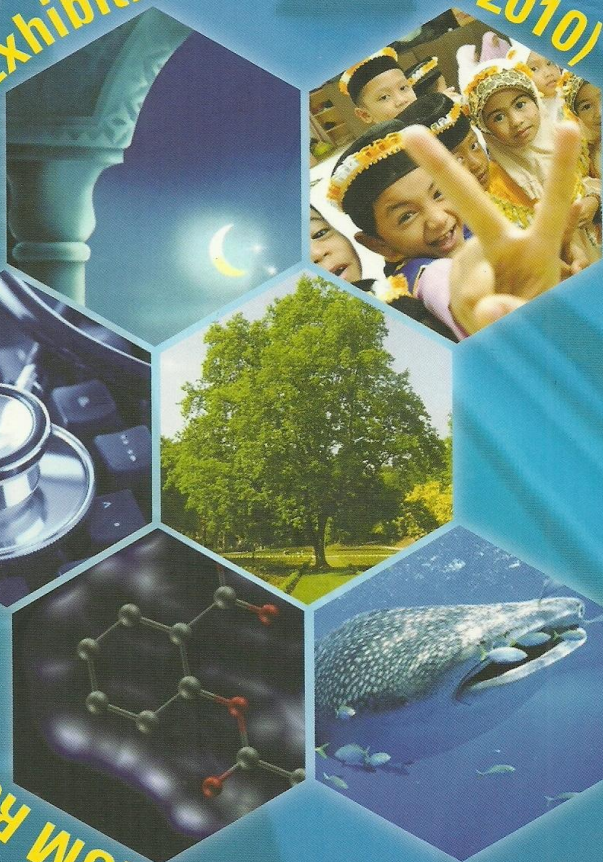
ENHANCING QUALITY RESEARCH &

# INNOVATION

for

**SOCIETAL**

**DEVELOPMENT**





**PP-5 Medical Negligence In Malaysia : Cases and Commentary**

***Puteri Nemie Jahn Kassim***

*Private Law Department, Ahmad Ibrahim Kulliyah of Laws  
International Islamic University Malaysia*

As the frontiers of medical knowledge and technology are continually challenged, the performance of medical professionals and providers of medical care is increasingly put under scrutiny. Higher expectations are placed on the standard of treatment, skill and care provided by medical professionals. This has led to increasingly more claims. This is the first book to be written on medical negligence case law in Malaysia, comprising cases from 1950's to present. It provides a useful compilation of local medical negligence decisions. The facts and brief holdings are presented clearly, followed by relevant excerpts of the courts' decisions. Key subject terms which precede each case provide a quick guide to its scope and content.

**PP-29 SOLAT: A Teaching Aid for KAFA**

***Media Anugerah Ayu, Media Anugerah, Naziha binti Yaakub, Siti Fatimah@Norfarizah Mohammed***  
*Department of Information Systems, Kulliyah of Information & Communication Technology  
International Islamic University Malaysia*

The product is a courseware to be used by students of Standard 1, 2 and 3 for the Kuliah Agama Fardhu Ain (KAFA). It teaches students about solat. The courseware was developed using Adobe Photoshop, Adobe Illustrator and Macromedia Flash. It is in the form of a multimedia of multimedia presentation which consist of six (6) modules. The modules are Instruction, Definition, Solat, Congregational Solat, Recitation and Quiz. Most of the modules are interactive and the presentation is quite appealing for the targeted user, i.e. children. The courseware shows that religious can be delivered in a very interesting and enjoyable way. This will make the early learners enjoy the learning activity, because they can view it as a play activity too.

**PP-30 A Web Based Survey Using Fuzzy Set Model**

***Media Anugerah Ayu, Abu Osman Md Tap, Aisyah Binti Ismail***  
*Department of Information Systems, Kulliyah of Information & Communication Technology  
International Islamic University Malaysia*

Turksen and Wilson (1995) have laid a theoretical ground for the works using a fuzzy set model for preference prediction. A fuzzy set conjoint model has been developed by incorporating fuzzy measurement of evaluations into the vector preference model. Mohtar et. al (2008) have done a study that used a fuzzy set preference model which represent linguistic variables, which usually used in survey research, to estimate overall preferences of costumer satisfaction on services provided by a shopping mall. This study by Mohtar et. al (2008) showed that the model has worked well and produced good results. Thus, we can use this fuzzy model to analyse survey data, instead of using statistical methods.

Our proposed study aims to develop a web-based software system that will be able to process and analyse survey data using the fuzzy set model mentioned above. We expect that from this study, a software prototype of the systems and a conference paper will be produced. The system prototype should provide functions of processing and analysing the survey data inputted and then producing summary results of the analysis. This software will be very beneficial for researchers who do survey research in doing the analysis using the fuzzy set model, especially if the amount of data is quite large. This web-based survey will definitely save time in analyzing the data. Furthermore, since it is a web based system, there is no spatial boundary of respondents that can be reached by the survey created in the system.