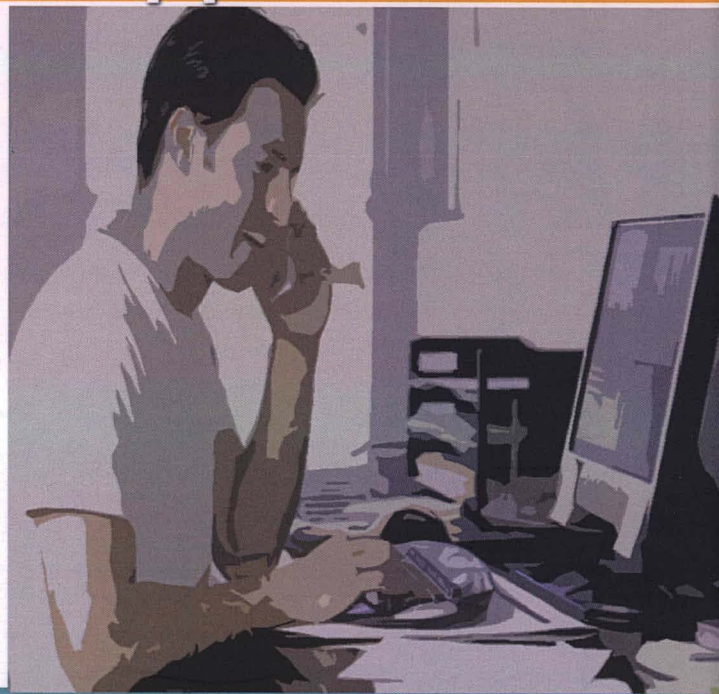


Computer Applications

Theories and Applications

Imad Fakhri Taha Al Shaikhli
Akram M. Zeki
Asadullah Shah



IIUM PRESS

INTERNATIONAL ISLAMIC UNIVERSITY MALAYSIA

Computer Applications: Theories and Applications

Edited By:

Imad Fakhri Taha Al Shaikhli
Akram M. Zeki
Asadullah Shah



IIUM Press

Published by:
IIUM Press
International Islamic University Malaysia

First Edition, 2011
©IIUM Press, IIUM

All rights reserved. No part of this publication may be reproduced, stored in a retrieval system, or transmitted, in any form or by any means, electronic, mechanical, photocopying, recording, or otherwise, without any prior written permission of the publisher.

Perpustakaan Negara Malaysia Cataloguing-in-Publication Data

Imad Fakhri Al Shaikhli, Akram M. Zeki and Asadullah Shah
Computer Applications: Theories and Applications
Imad Fakhri Al Shaikhli, Akram M. Zeki and Asadullah Shah
978-967-418-107-9

ISBN: 978-967-418-107-9

Member of Majlis Penerbitan Ilmiah Malaysia – MAPIM
(Malaysian Scholarly Publishing Council)

Printed by :
IIUM PRINTING SDN. BHD.
No. 1, Jalan Industri Batu Caves 1/3
Taman Perindustrian Batu Caves
Batu Caves Centre Point
68100 Batu Caves
Selangor Darul Ehsan

TABLE OF CONTENTS

Dedication	i
Preface	vii
Acknowledgement	ix
Introduction	xi - xvi
List of Abbreviations	xvii - xviii
Part I: Genetic Algorithm & Its State-of-the-art Applications	
1. The Use of Genetic Algorithm in Autonomous Robot Navigation	3 - 13
- Raini Hassan	
- Imad Fakhri Taha Al-Shaikhli	
- Asadullah Shah	
2. In-Silico Drug Target Design & Its Approaches	15 - 26
- Hassen Mohammed Abduallah Alsafi	
- Imad Fakhri Taha Al-Shaikhli	
- Asadullah Shah	
3. Implementing DNA Sequence Using Genetic Algorithm	27 - 36
- Ahmad Faridi Abdul Fatin	
- Aqqiela Zuhra	
- Imad Fakhri Taha Al-Shaikhli	
- Asadullah Shah	

4. Molecular Docking	37 - 44
- Hassen Mohammed Abdullah Alsafi	
- Imad Fakhri Taha Al-Shaikhli	
- Asadullah Shah	
5. The Use of Genetic Algorithm in Improving Medical Image Segmentation Techniques	45 - 55
- Raini Hassan	
- Imad Fakhri Taha Al-Shaikhli	
- Asadullah Shah	
 Part II: The Use of Computer Security in Improving the Qur'an Data Security	
6. Protection Mechanisms Using MD5 and Base64	59 - 69
- Mohammad A. Ahmad	
- Imad Fakhri Taha Al-Shaikhli	
- Hanady Mohammad Ahmed	
- Asadullah Shah	
7. Developed System for Quran Protection Using MD5 and Base64	71 - 84
- Mohammad A. Ahmad	
- Imad Fakhri Taha Al-Shaikhli	
- Hanady Mohammad Ahmed	

8. Protection Mechanisms Using LSB and MD5	85 - 98
- Imad Fakhri Taha Al-Shaikhli	
- Mohammad A. Ahmad	
- Sondos Alhussainan	
- Asadullah Shah	
9. Developed System for Quran Protection using LSB Replacement and MD5	99 - 109
- Mohammad A. Ahmad	
- Sondos Alhussainan	
- Imad Fakhri Taha Al-Shaikhli	
 Part III: ATM Systems	
10. An Overview of ATM Systems Security	113 - 128
- Omarah O. Alharaki	
- Mohammed Hweidi	
- Akram M. Zeki	
11. Security Risk of ATM Systems, Case of Study	129 - 138
- Omarah O. Alharaki	
- Mohammed Hweidi	
- Akram M. Zeki	
- Asadullah Shah	
12. Threats and Solutions for ATM Security Systems	139 - 152
- Omarah O. Alharaki	
- Mohammed Hweidi	
- Akram M. Zeki	

Part IV: General Use of ICT

13. Investigating the Student's awareness on Computer Security and Ethics 155 - 177

- Mansur Aliyu
- Nahel A. O. Abdallah
- Nojeem A. Lasisi
- Dahir Diyar
- Ahmed M. Zeki
- Akram M. Zeki

14. Difficulties and Challenges of Recognizing Arabic Text 179 - 191

- Mustafa Ali Abuzaraida
- Akram M. Zeki
- Ahmed M. Zeki

11. Security Risk of ATM Systems, Case of Study

**Omarah O. Alharaki, Mohammed Hweidi, Akram M. Zeki,
Asadullah Shah**

ABSTRACT

This study comprises a case study approach to identify the high priority given to ATM security breach issues. The analysis comprises of comparison between 2 ATM security strategies implemented by two individual banks, namely (A) Siam City Bank PCL which use BASE 24-ATM solution for ATM security and the other one is (B) SCOTIA Bank which use (MPLS) solution for ATM security. Thus enables the study to report on the effective methods of ATM security practiced.

BACKGROUND

ATMs are generally designed for through the wall operations as well for use in lobbies. The Banker's magazine, September (1983), indicated that the ATMs provided convenient bank access to customers' accounts 24 hours a day, seven days a week including public holidays. The lobby machines which are installed in the