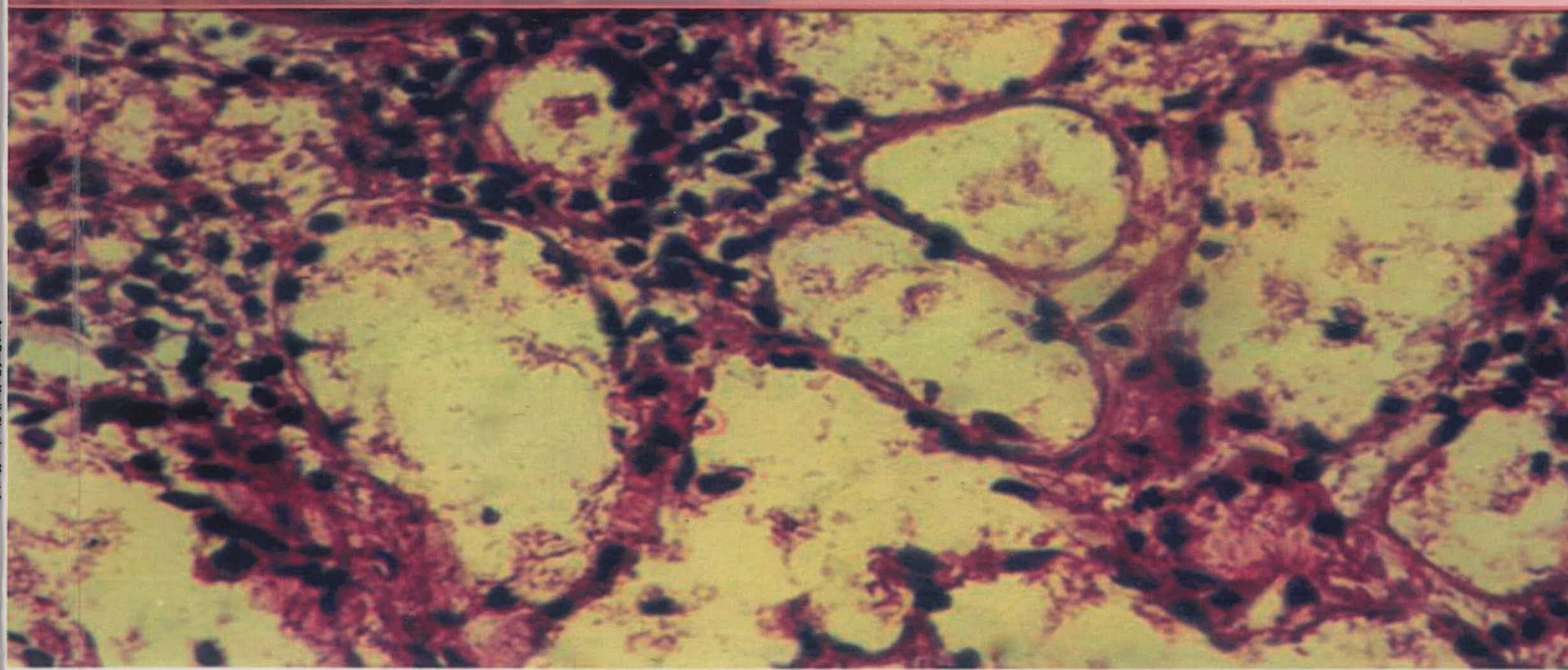




APPLICATION OF BASIC MEDICAL SCIENCES IN CLINICAL DENTISTRY



Asst Prof Dr Nazih Shaaban Mustafa DDS, MSc, PhD
Assistant Professor Kulliyah of Dentistry IIUM

Asst Prof Dr Htar Htar Aung MBBS, PhD (Tokyo)
Assistant Professor Kulliyah of Dentistry IIUM



APPLICATIONS OF BASIC MEDICAL SCIENCES IN CLINICAL DENTISTRY

Editors:

Dr Nazih Shaaban Mustafa

Assistant Professor Kulliyah of Dentistry IIUM

Dr Htar Htar Aung

Assistant Professor Kulliyah of Dentistry IIUM



IIUM Press

Published by:
IIUM Press
International Islamic University Malaysia

First Edition, 2011
©IIUM Press, IIUM

All rights reserved. No part of this publication may be reproduced, stored in a retrieval system, or transmitted, in any form or by any means, electronic, mechanical, photocopying, recording, or otherwise, without any prior written permission of the publisher.

Perpustakaan Negara Malaysia

Cataloguing-in-Publication Data

Nazih Shaaban Mustafa & Htar Htar Aung: Applications of Basic Medical Sciences in Clinical Dentistry

ISBN: 978-967-0225-84-5

Member of Majlis Penerbitan Ilmiah Malaysia – MAPIM
(Malaysian Scholarly Publishing Council)

Printed by :
IIUM PRINTING SDN. BHD.
No. 1, Jalan Industri Batu Caves 1/3
Taman Perindustrian Batu Caves
Batu Caves Centre Point
68100 Batu Caves
Selangor Darul Ehsan

TABLE OF CONTENTS

ACKNOWLEDGEMENT	i
CHAPTER 1 INTRODUCTION	1
CHAPTER 2 SALIVA AS A DIAGNOSTIC AND PROGNOSTIC PARAMETER IN SYSTEMIC DISEASES (5815/17148)	
2.1 Introduction	3
2.2 Diagnostic Uses of Saliva	4
2.3 Formation of Saliva	5
2.4 Functions of Saliva	6
2.5 Composition of Saliva	8
2.6 Flow Rate.....	10
2.7 Xerostomia	10
2.8 Bibliography	12
CHAPTER 3 INFRATEMPORAL FOSSA (5910/17150)	16
3.1 Boundaries of the Infratemporal Fossa	17
3.2 Contents	18
3.3 Clinical Importance	29
3.4 Bibliography	30
CHAPTER 4 TISSUE SPACES AROUND THE UPPER AND LOWER JAWS (5910/17517)	31
4.1 Submental Space	32
4.2 Submandibular Space	33
4.3 Sublingual Space	35
4.4 Buccal Space	36
4.5 Submasseteric Space	37
4.6 Parotid Space	37
4.7 Pterygomandibular Space	38
4.8 Bibliography	39

CHAPTERS 5 BLOOD VESSELS OF THE HEAD AND NECK (5910/17549)

5.1 Description on Common Carotid Artery 40
5.2 Description on External Carotid Artery 41
5.3 Description on Internal Carotid Artery 46
5.4 Description on Venous Drainage of the Head and Neck 49
5.5 Bibliography 52

CHAPTERS 6 ORAL CANCER (5756/17552)

6.1 Early Detection of Oral Cancer..... 53
6.2 Squamous Cell Carcinoma 56
6.3 Biopsy 58
6.4 Clinical and Radiographical Features 61
6.5 Bibliography 65

CHAPTERS 7 TOOTH MORPHOLOGY IN CLINICAL DENTAL PRACTICE (5504/17554)

7.1 Introduction 66
7.2 Mamellons 67
7.3 Perikymata 68
7.4 Lobes 69
7.5 Bibliography 73

LIST OF CONTRIBUTORS..... 74

INDEX 75

CHAPTER 4 *Dr. Htar Htar Aung*

Tissue Spaces around the Upper and Lower Jaws

The tissue spaces are potential spaces normally occupied by loose connective tissue. Infection will spread from one tissue space to another by direct communication or through the lymphatics and blood vessels. The infection may also invade the tissue spaces by directly eroding the intervening fascia.

The most important tissue spaces are as follows.

1) The tissue spaces around the upper jaw are:

- Canine fossa
- Infratemporal fossa
- Palatal space

2) The tissue spaces around the lower jaw are:

- Buccal space
- Parapharyngeal space
- Parotid space
- Peritonsillar space
- Pterygomandibular space
- Sublingual space
- Submandibular space
- Submental space