

【刘哲伟专栏】政府需要改善主要数据库系统 (PADU)



刘哲伟

最后更新1年前 · 刊登于11 Jan 2024 3:22PM · 0条评论



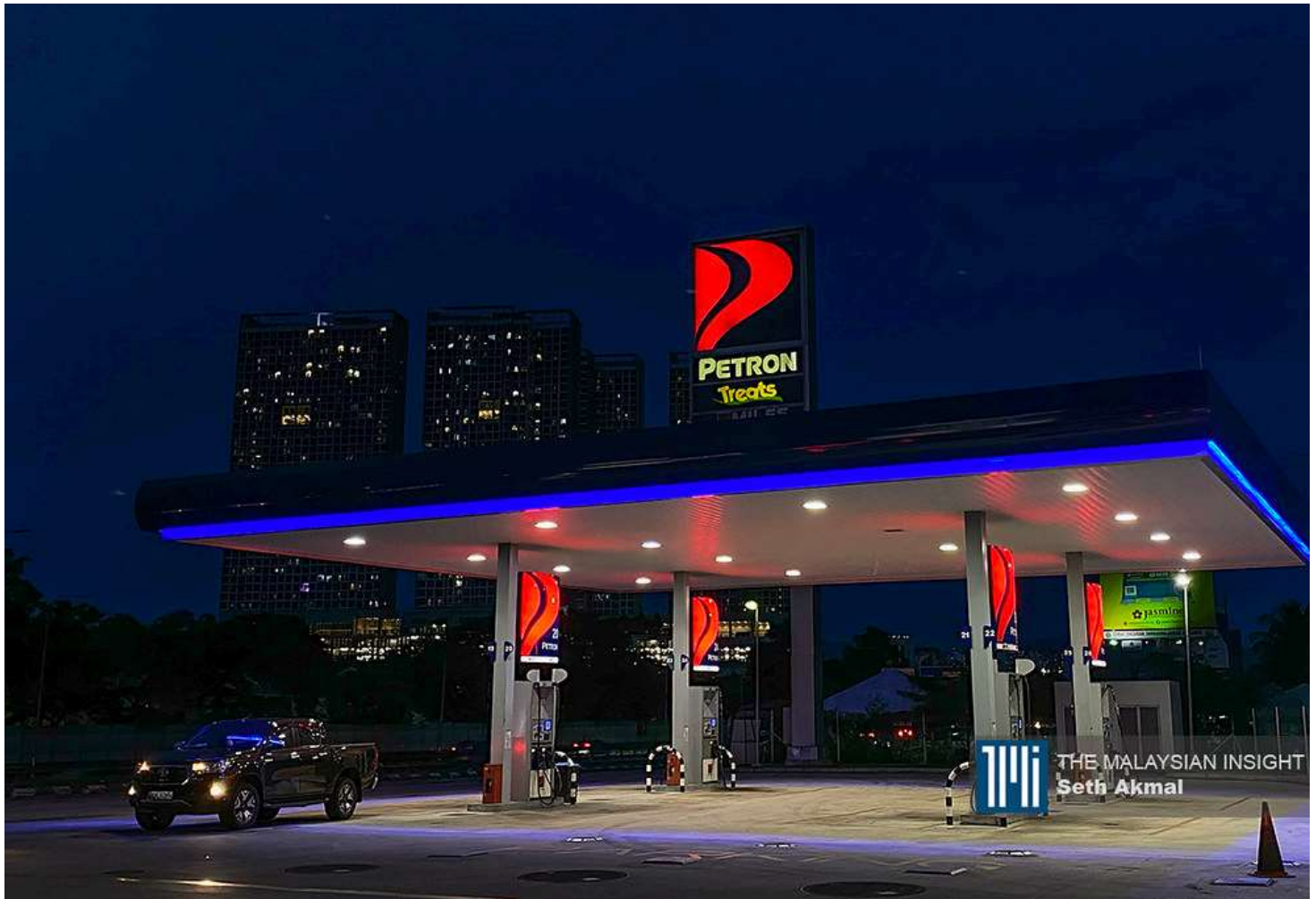
主要数据库系统 (PADU) 这个概念，从长远来看这是有必要的，可以缩短一长串官僚主义的繁文缛节。（图：截取脸书）

我喜欢主要数据库系统 (PADU) 这个概念，从长远来看这是有必要的，它可以缩短一长串官僚主义的繁文缛节，最理想情况是，我们不必一次又一次地重新填写所有数据。此外，有了更精确的数据，政府可以针对性的发放补贴。

或许，我进一步解释一下定向补贴的含义，例如为了降低运输和物流等成本，最简单的办法就是补贴燃油。随着燃油价格的降低，所有与燃油相关的行业、活动就不会调涨，这也是降低成本的最简单方法之一。但实际上，即使是有钱人也能得到补

贴，而这并不理想。

为了解决这个问题，政府可以简单地根据家庭收入提供补贴或豁免。政府这样做是为了给予更有针对性的补贴和帮助。虽说如此，这也还不理想。收入并无法正确的显示出一个人的经济需要，例如有几个孩子，父母是否需照料，其他经济负担等等。



随着燃油价格的降低，所有与燃油相关的行业、活动就不会调涨，这也是降低成本的最简单方法之一。（档案照：透视大马）

就家庭收入而言，对于家庭成员数量以及城乡家庭来说，确实会影响家庭的财务能力和消费能力。令人感到遗憾的是，以上这些都没有准确文档可以记录下来，因此一站式数据中心确实非常关键。

虽然我基本上同意这个概念，但我对这个PADU系统存有疑问。

第一，为何要千呼万唤才推出，而且我没想到其内容空泛。它不与其他部委和部门的详细信息同步，我们必须自行填写。我们可以欺骗吗？倘若答案确定，那它的信息就会不准确。若根据部长拉菲兹的说法，那么答案则是否定的，我们不能撒

谎，因为在长达一小时的新闻发布会上，他确实提到我们输入的数据将与政府现有的数据一致。如果我理解正确的话，那就很有趣了。如果政府有我们的数据，为什么不同步呢？

第二，这个网站确实不方便用户使用。如果这个网站是由非专业人士开发的，那么我不会责怪它，但它是来自一个部门。一个简单的例子是，当你要选择一个选项时，由于选择列表很长，通常会有一个光标供您拖动到选项的下部。令人感到遗憾的是，此操作并不友善。我必须用一种创造性的方式思考，那就是指向与我无关的那个，然后用键盘按下往下的指示。试想，对于不太懂电脑科技的人而言，这岂不是给他们带来不必要的麻烦吗？

第三，当我要验证自己的身份时就出现问题，上面显示“Capaian akses tidak sah. Pastikan peranti anda menggunakan versi OS dan pelayar web terkini.”（无效的访问权限。确保您的设备使用最新版本的操作系统和网络浏览器）。我不知道这是怎么回事，就卡在那里。你想我会继续完成吗？当然是不会啦。

一站式数据中心是一个好主意，并且从长远来看是实用。（档案照：透视大马）

第四，许多人没有动力去登记。老实说，如果不是因为一个讲座会需要我在针对PADU系统发表评论，我本身也不会登记。我曾经询问过身边的朋友、同事和学生等等。他们中的大多数人还没有为自己登记，也没有兴趣登记。这才是问题。政府要么表现出鼓励性激励措施，要么强制民众登记，如强制所有公务员登记，倘若未登记的人就无法获取援助金等等，但在政治上，表现得太强硬会适得其反，表现太太软则无济于事。

第五，这个PADU的目的是什么？我的字面理解是，更多的是针对援助目标群体。对我来说，这是一种浪费。既然系统已经研发出来，为什么不将其作为一站式中心，让所有信息可以用于所有目的。



未来政府将更容易提取任何信息、预测或任何对政府有利的事务。当然，要做到这一点，部门必须加强个人信息安全的保证。

总之，一站式数据中心是一个好主意，并且从长远来看是实用。令人感到惋惜的是，这个PADU暂时性是中看不中用。

* 刘哲伟目前在国际伊斯兰大学政治学系任职助理教授。在此之前，也曾其他高等学府执教。刘哲伟先后于马来西亚国立大学取得政治学学士及硕士学位，并于英国布里斯托大学取得政治学博士。

相关文章

- [PADU登记人数突破100万人 拉菲兹：助转向目标式补贴](https://www.themalaysianinsight.com/chinese/s/479417)
(<https://www.themalaysianinsight.com/chinese/s/479417>)
- [讽政府漠视数据安全 袁怀绍：应先落实保护及共享数据法](https://www.themalaysianinsight.com/chinese/s/478912)
(<https://www.themalaysianinsight.com/chinese/s/478912>)
- [立即暂停PADU注册 黄日昇建议政府邀王建民为顾问](https://www.themalaysianinsight.com/chinese/s/478882)
(<https://www.themalaysianinsight.com/chinese/s/478882>)
- [拉菲兹：戴眼镜不影响注册PADU认证程序](https://www.themalaysianinsight.com/chinese/s/478903)
(<https://www.themalaysianinsight.com/chinese/s/478903>)
- [【刘哲伟专栏】类似迪拜行动未来仍会接连不断](https://www.themalaysianinsight.com/chinese/s/478899)
(<https://www.themalaysianinsight.com/chinese/s/478899>)
- [抨政府曾滥用民众个资 律师组织建议暂停PADU注册](https://www.themalaysianinsight.com/chinese/s/478881)
(<https://www.themalaysianinsight.com/chinese/s/478881>)

若想留言，请订阅或登录。

[Liu Zhewei Column] The government needs to improve the main database system (PADU)



Liu Zhewei

Last updated 1 year ago · Published on 11 Jan 2024 3:22PM · 0 comments



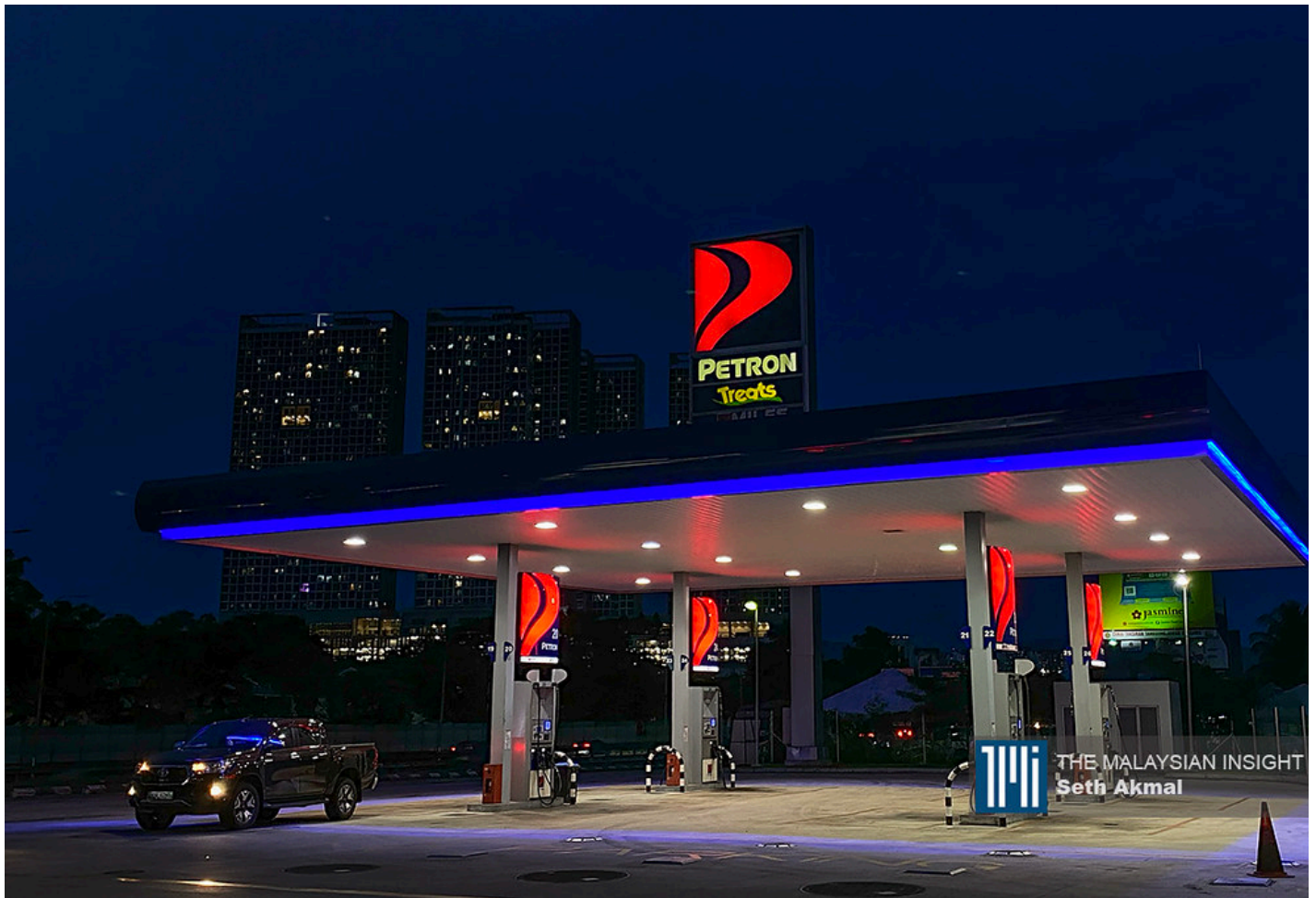
The concept of the main database system (PADU) is necessary in the long run to shorten a long series of bureaucratic red tape. (Picture: Screenshot from Facebook)

I like the concept of PADU, which is necessary in the long run, to shorten the long list of bureaucratic red tapes, and ideally we don't have to fill in all the data again and again. Also, with more accurate data, the government can target subsidies.

Perhaps I can explain further what targeted subsidies mean. For example, in order to reduce costs such as transportation and logistics, the simplest way is to subsidize fuel. With the reduction of fuel prices, all fuel-related industries

and activities will not increase, which is also one of the simplest ways to reduce costs. But in reality, even rich people can get subsidies, which is not ideal.

To address this, the government could simply provide subsidies or exemptions based on household income. The government does this to give more targeted subsidies and assistance. However, this is not ideal. Income does not accurately reflect a person's financial needs, such as how many children they have, whether they need to take care of their parents, other financial burdens, etc.



As fuel prices drop, all fuel-related industries and activities will not increase their prices, which is one of the easiest ways to reduce costs. (File photo: Malaysian Insight)

In terms of household income, the number of family members, and whether it is an urban or rural household, it does affect the financial capacity and spending power of the household. Unfortunately, none of this is accurately documented, so a one-stop data center is really critical.

While I generally agree with the concept, I have issues with this PADU system.

First, why did it take so long to launch, and I didn't expect it to be so vague. It is not synced with details from other ministries and departments, we have to fill it in ourselves. Can we cheat? If the answer is yes, then its information is inaccurate. If it is according to Minister Rafizi, then the answer is no, we can't lie because in the hour-long press conference, he did mention that the data we input will be consistent with the data the government already has. If I understand correctly, it is very interesting. If the government has our data, why is it not synced?

Second, this website is really not user-friendly. If this website was developed by non-professionals, then I would not blame it, but it is from a department. A simple example is that when you want to select an option, because the list of choices is long, there is usually a cursor for you to drag to the lower part of the option. It is regrettable that this operation is not user-friendly. I have to think in a creative way, that is, point to the one that is not related to me, and then press the down instruction with the keyboard. Just think about it, for people who are not very computer-savvy, isn't this an unnecessary inconvenience for them?

Third, the problem occurred when I tried to verify my identity. It said "Invalid access rights. Make sure your device is using the latest version of the operating system and web browser." I don't know what's going on. I'm stuck there. Do you think I will continue to complete it? Of course not.

One-stop data centers are a good idea and will be practical in the long run. (File photo: Malaysian Insight)

Fourth, many people have no motivation to register. To be honest, if I hadn't been asked to comment on the PADU system for a lecture, I wouldn't have registered myself. I have asked friends, colleagues, students, etc. Most of them have not registered themselves and are not interested in registering. This is the problem. The government can either show encouraging incentives or force people to register, such as forcing all civil servants to register, and those who are not registered cannot get assistance, etc., but in politics, being too tough will backfire, and being too soft will not help.

Fifth, what is the purpose of this PADU? My literal understanding is that it is more for the target group of assistance. To me, this is a waste. Since the system has been developed, why not make it a one-stop center where all information can be used for all purposes.



In the future, it will be easier for the government to extract any information, predictions, or anything that is beneficial to the government. Of course, to do this, departments must strengthen the guarantee of personal information security.

All in all, a one-stop data center is a good idea and will be practical in the long run. It is a pity that this PADU is only good for show and not for use at the moment.

** Liu Zhewei is currently an assistant professor in the Department of Political Science at the International Islamic University. Prior to this, he also taught at other institutions of higher learning. Liu Zhewei obtained his bachelor's and master's degrees in political science from the National University of Malaysia, and his doctorate in political science from the University of Bristol, UK.*

Related articles

- [PADU registration exceeds 1 million; Rafizi: Helps shift to targeted subsidies \(https://www.themalaysianinsight.com/chinese/s/479417\)](https://www.themalaysianinsight.com/chinese/s/479417)

- Yuan Huaishao criticizes the government for ignoring data security: The law on protecting and sharing data should be implemented first
(<https://www.themalaysianinsight.com/chinese/s/478912>)
- Immediately suspend PADU registration Huang Risheng suggested that the government invite Wang Jianmin as an advisor (<https://www.themalaysianinsight.com/chinese/s/478882>).
- Rafizi: Wearing glasses does not affect the PADU certification process
(<https://www.themalaysianinsight.com/chinese/s/478903>)
- [Liu Zhewei Column] Similar actions to Dubai will continue in the future
(<https://www.themalaysianinsight.com/chinese/s/478899>)
- Criticizing the government for abusing people's personal information, a lawyer organization suggested suspending PADU registration
(<https://www.themalaysianinsight.com/chinese/s/478881>)

If you want to leave a comment, please subscribe or log in.