

Normal left foot MRI



Case contributed by Mohd Radhwan Bin Abidin

● Diagnosis not applicable

× Citation, DOI, disclosures and case data

Share

Add to ▾

Citation: Abidin M, Normal left foot MRI. Case study, Radiopaedia.org (Accessed on 19 Dec 2023) <https://doi.org/10.53347/rID-163787>

DOI: <https://doi.org/10.53347/rID-163787>

Permalink: <https://radiopaedia.org/cases/163787>

rID: 163787

Disclosures: At the time the case was submitted for publication Mohd Radhwan Bin Abidin had no financial relationships to ineligible companies to disclose.

[View Mohd Radhwan Bin Abidin's current disclosures](#)

Case published: 3 Mar 2023

Revisions: 1 time, by 1 contributor - see full revision history and disclosures

Systems: Musculoskeletal

Institution: International Islamic University Malaysia

Quiz mode: Excluded

Presentation

Left foot swelling

Patient Data

Age: 40 years

Gender: Female

Left foot

MRI



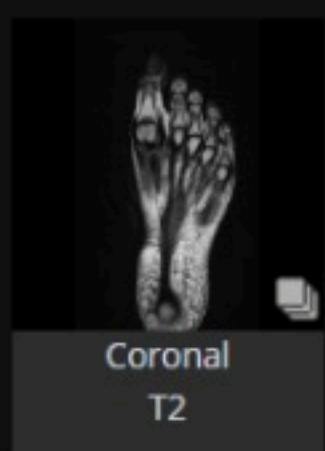
Sagittal T1 fat sat



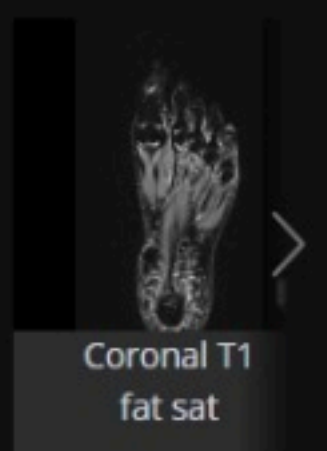
Sagittal T1



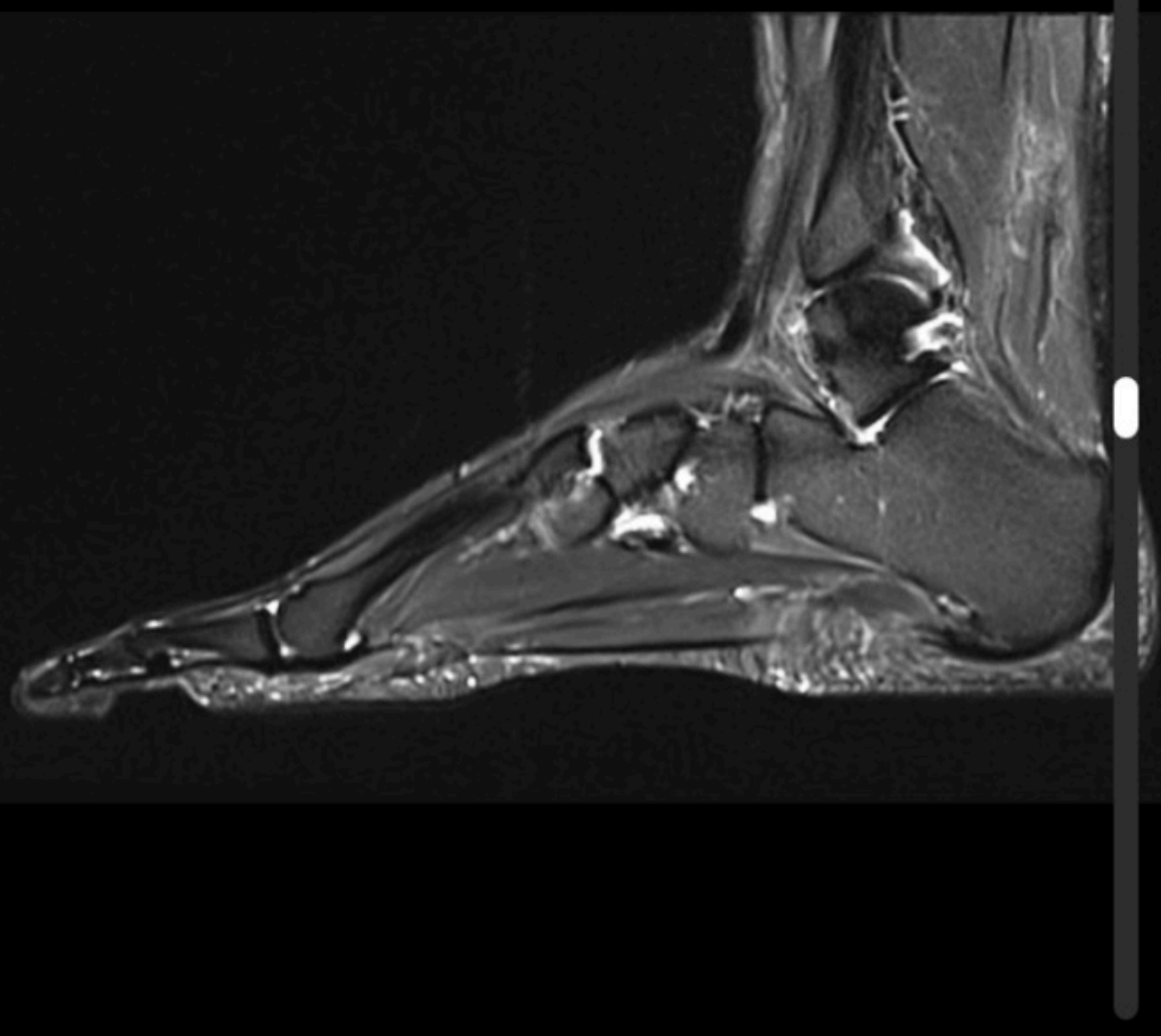
Sagittal PD fat sat



Coronal T2



Coronal T1 fat sat



The tarsal, metatarsal and the phalanges are normal. No joint dislocation. The bone shows normal signal intensity. Underlying muscles shows normal signal. Flexor and extensor tendons are normal. Subcutaneous fat also shows normal signal intensity.

Case Discussion

This is normal MRI foot using 3 Tesla MRI machine.

How to use cases

You can use Radiopaedia cases in a variety of ways to help you learn and teach.

- Add cases to playlists
- Share cases with the diagnosis hidden
- Use images in presentations
- Use them in multiple choice question

Creating your own cases is easy.

- Case creation learning pathway

ADVERTISEMENT: Supporters see fewer/no ads



Ads by Google

Send feedback

Why this ad? ⓘ