

Normal right hand MRI



Case contributed by Mohd Radhwan Bin Abidin

● Diagnosis not applicable

× Citation, DOI, disclosures and case data

Share

Add to ▾

Citation: Abidin M, Normal right hand MRI. Case study, Radiopaedia.org (Accessed on 19 Dec 2023) <https://doi.org/10.53347/rID-161538>

DOI: <https://doi.org/10.53347/rID-161538>

Permalink: <https://radiopaedia.org/cases/161538>

rID: 161538

Disclosures: At the time the case was submitted for publication Mohd Radhwan Bin Abidin had no financial relationships to ineligible companies to disclose.

[View Mohd Radhwan Bin Abidin's current disclosures](#)

Case published: 10 Feb 2023

Revisions: 1 time, by 1 contributor - see full revision history and disclosures

Systems: Musculoskeletal

Institution: International Islamic University Malaysia

Quiz mode: Excluded

How to use cases

You can use Radiopaedia cases in a variety of ways to help you learn and teach.

- Add cases to playlists
- Share cases with the diagnosis hidden
- Use images in presentations
- Use them in multiple choice question

Creating your own cases is easy.

- Case creation learning pathway

Presentation

Finger pain

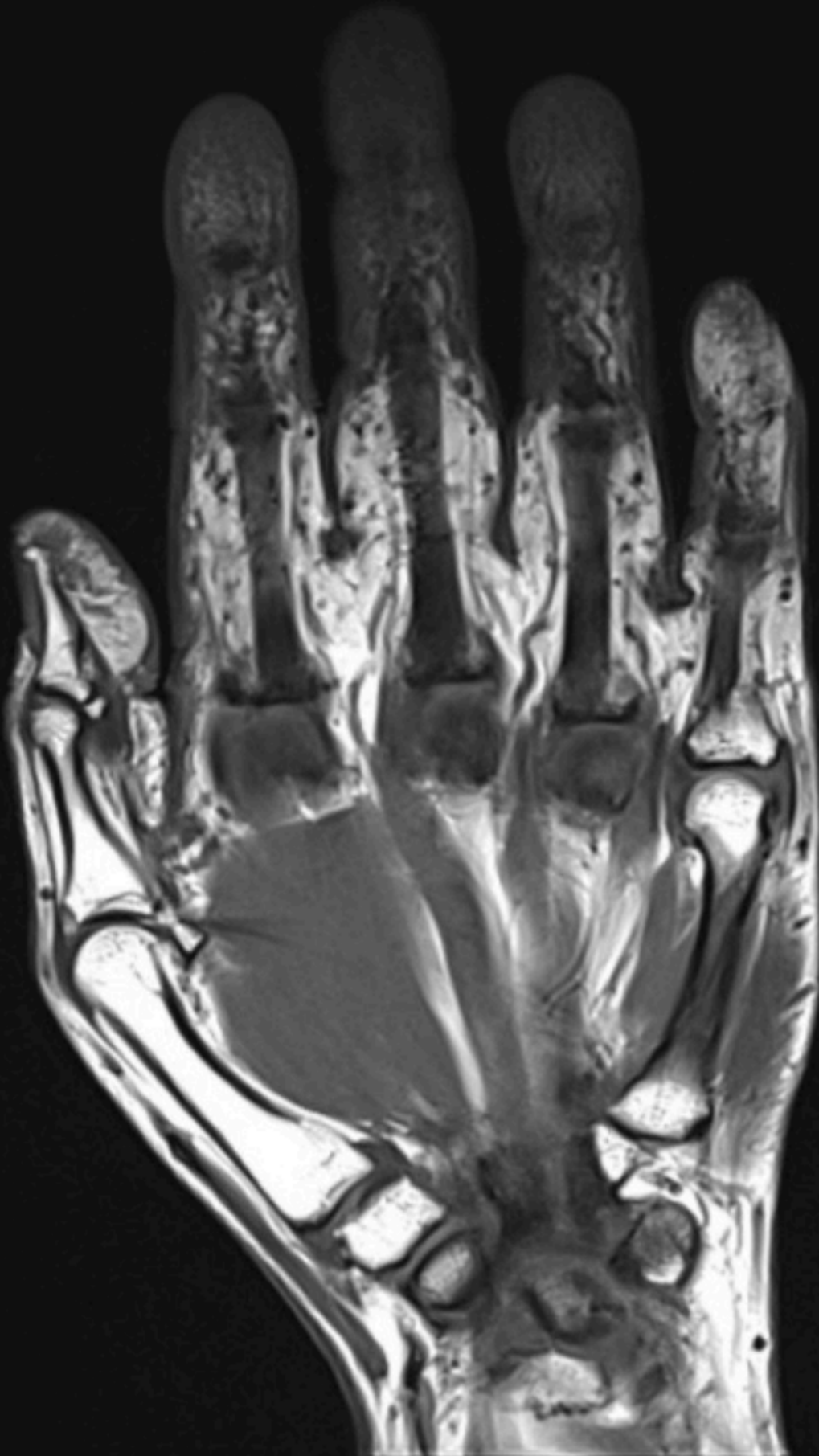
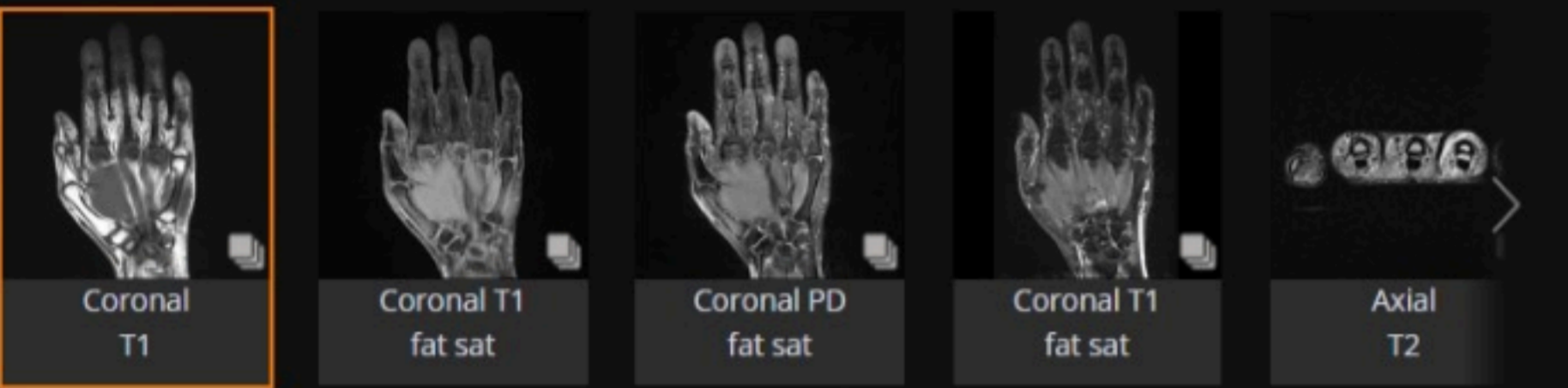
Patient Data

Age: 60 years

Gender: Female

Right hand

MRI



The medial and lateral collateral ligaments of the metacarpophalangeal joints are intact. The flexor and extensor tendons are normal. The interosseous tendons and the lateral bands are normal.

No joint dislocation. No abnormal marrow signal. No abnormal joint effusion. Visualized muscles are normal.

Case Discussion

This is normal MRI of right hand, using 3 Tesla machine.

ADVERTISEMENT: Supporters see fewer/no ads

← Ads by Google

Send feedback

Why this ad? ⓘ