

Normal MRI right elbow

Case contributed by Mohd Radhwan Bin Abidin

● Diagnosis not applicable

× Citation, DOI, disclosures and case data

Share

Add to ▾

Citation: Abidin M, Normal MRI right elbow. Case study, Radiopaedia.org (Accessed on 18 Dec 2023) <https://doi.org/10.53347/rID-160653>

DOI: <https://doi.org/10.53347/rID-160653>

Permalink: <https://radiopaedia.org/cases/160653>

rID: 160653

Disclosures: At the time the case was submitted for publication Mohd Radhwan Bin Abidin had no financial relationships to ineligible companies to disclose.

[View Mohd Radhwan Bin Abidin's current disclosures](#)

Case published: 26 Jan 2023

Revisions: 2 times, by 2 contributors - see full revision history and disclosures

Systems: Musculoskeletal

Institution: International Islamic University Malaysia

Quiz mode: Excluded

How to use cases

You can use Radiopaedia cases in a variety of ways to help you learn and teach.

- Add cases to playlists
- Share cases with the diagnosis hidden
- Use images in presentations
- Use them in multiple choice question

Creating your own cases is easy.

- Case creation learning pathway

Presentation

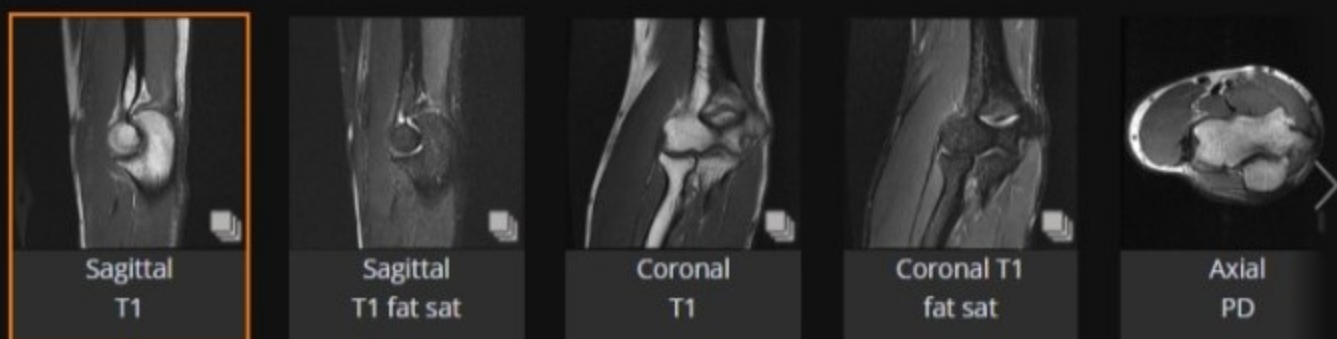
Right hand numbness and weakness

Patient Data

Age: 25 years
Gender: Male

Right elbow

MRI



The ulnar nerve is noted at posterior to the medial epicondyle of the humerus. No nerve thickening or abnormal signal intensity. No anconeus epitrochlearis muscle. The visualized median and radial nerve are normal.

The ulnar collateral and radial collateral ligaments are intact. Visualized muscles are normal. No abnormal bone marrow signal.

Case Discussion

Normal right elbow MRI reference.

This is using 3 Tesla MRI without arthrogram.