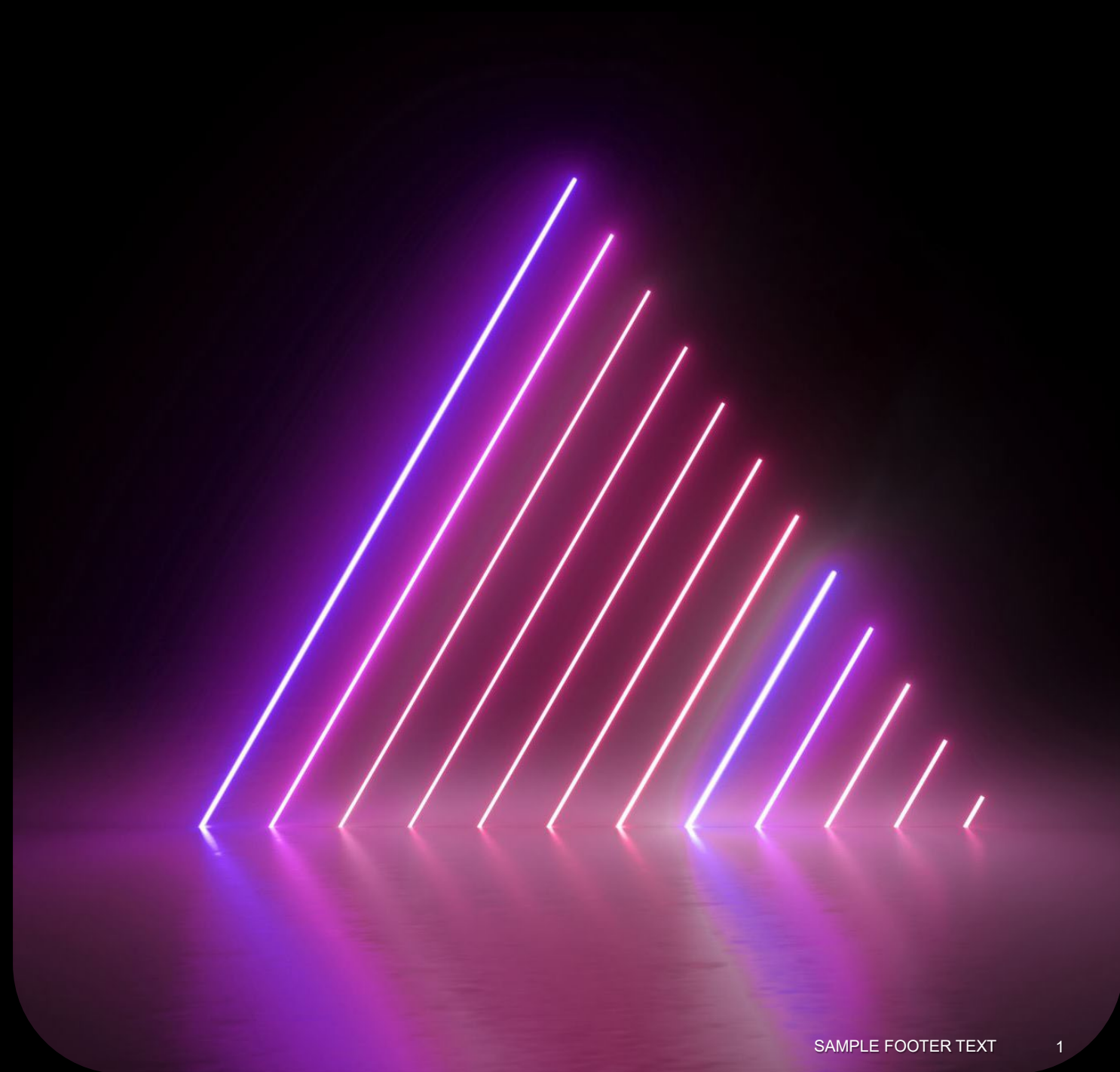


Where were the Women in GE15?

RABI'AH AMINUDIN
DEPARTMENT OF POLITICAL SCIENCE
AHAS KIRKHS

13.09.2023



Women in GE15

- 127 female candidates contested in GE15
- PH-19%
- BN-12%
- PN-11%
- GTA- 14%
- Total- 13.4%
- Youngest candidate- P181 TENOM (Peggy Chaw Zhi Ting- 23 years old)- Independent



MANIFESTOS FOR WOMEN IN GE15

ITEM	PH	PN	BN
Self-care	Free sanitary pads and tampons for public school students and B40 women	Increase paternity leave to 14 days	Subsidies for mammograms and cervix cancer check up
Working women	Childcare subsidy: M40 and B40	<ul style="list-style-type: none"> • RM1000 tax exemption • Nurseries at workplace 	<ul style="list-style-type: none"> • Tax deduction for employers that offer flexible working arrangement • 5 years tax exemption after career break
Citizenship	Citizenship for children born overseas for Malaysian women	Amendment of constitution	

MANIFESTOS FOR WOMEN IN GE15

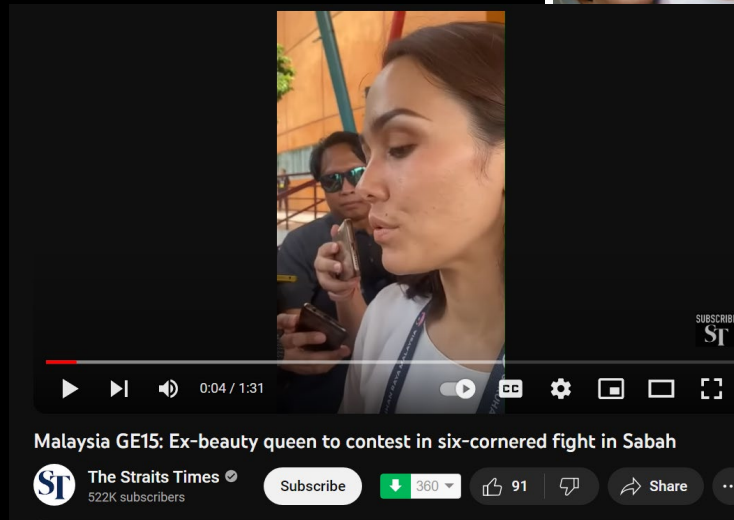
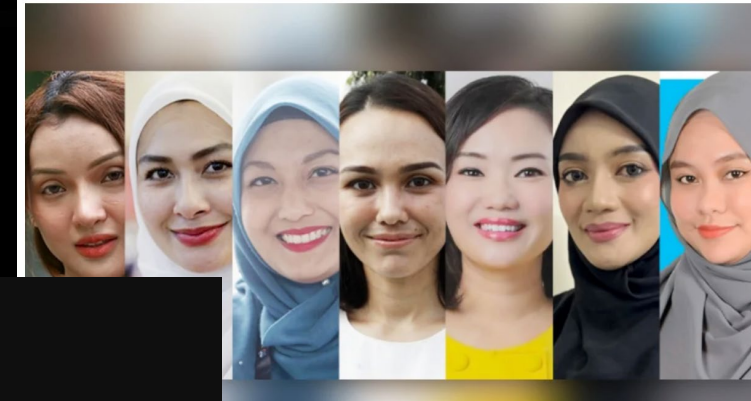
ITEM	PH	PN	BN
Female specific institutions	-	-	Women teaching hospitals, women specialist hospital
Economic initiatives	Quota min 40%; skills training programmes and micro entrepreneurial grants for women	<ul style="list-style-type: none"> • Kad Kasih Ibu • Increase Suri scheme contribution • Interest-free loan 	<ul style="list-style-type: none"> • Women Economic Development Bank
Shari'ah Court	Empower scholarship and administration, protection of women's rights	Cooperation with state agencies to execute hiwalah order to protect the rights of single mothers and children	To empower Islamic legal system

Our Women on the Ground

- Appearance biases
 - + Media tend to highlight female candidates' appearances rather than their capacities- "jelitawan", full package, beauty with brains
 - + Media tend to portray female politicians as women first, and politicians second
 - + Women tend to be stereotyped to certain feminine traits such as education, healthcare, environment, and childcare compared to "hard and masculine" issues such as fiscal and monetary policies, military and defense, and foreign policy.



PRU15: Tujuh calon jelitawan, 'beauty with brain' curi perhatian
 Sudirman Mohd Tahir - November 6, 2022 @ 8:07pm
 bhnews@bh.com.my



Terms that emphasize women's traditional roles and focus on their appearance. They perpetuate stereotypes of women politicians as weak, indecisive, and emotional

Sanusi Defends His Sexist Remarks, Insists Sik To Have A Male MP

He explained that the vast, rural, and poor demographic in Sik is more suited for a man.



BY ADELINE LEONG
NOVEMBER 13, 2022



TRP

NOW READING

Sanusi Defends His Sexist Remarks, Insists

Subscribe to our [Telegram](#) channel for the latest stories and updates.

Kedah menteri besar and PAS central election director Datuk Seri Muhammad Sanusi Md Nor was previously called out for his sexist remarks.

- Female candidates also are often put in the spotlight of the media for their family life and receive more questions on the social aspects of being in office and in personal experiences.

GE15: Battle of two grandmas in Hulu Selangor

By STUART MICHAEL



GE15: Battle of two grandmas in Hulu Selangor

METRO NEWS

Friday, 18 Nov 2022

12:58 PM MYT



Azlinda Baroni (left) and Haniza Mohamed Talha.

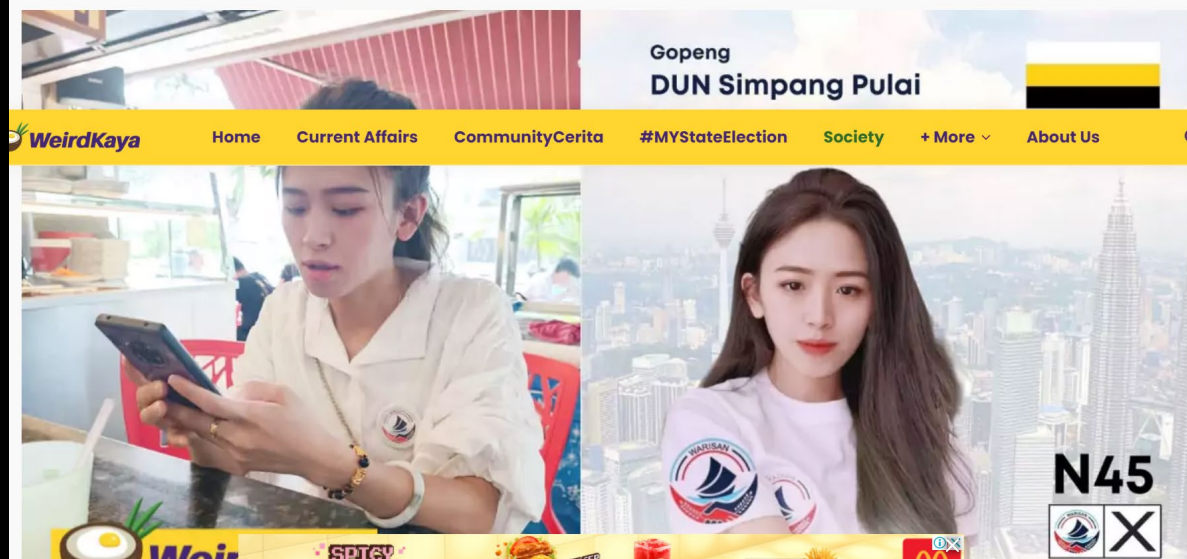


“Focus On My Service, Not Looks”, GE15 Candidate Tells M’sians After Many Say She Looks Different From Photos

The GE15 candidate has spoken.

YU ANG TAN | NOVEMBER 11, 2022

Share on Facebook Share on Twitter



Images of women candidates

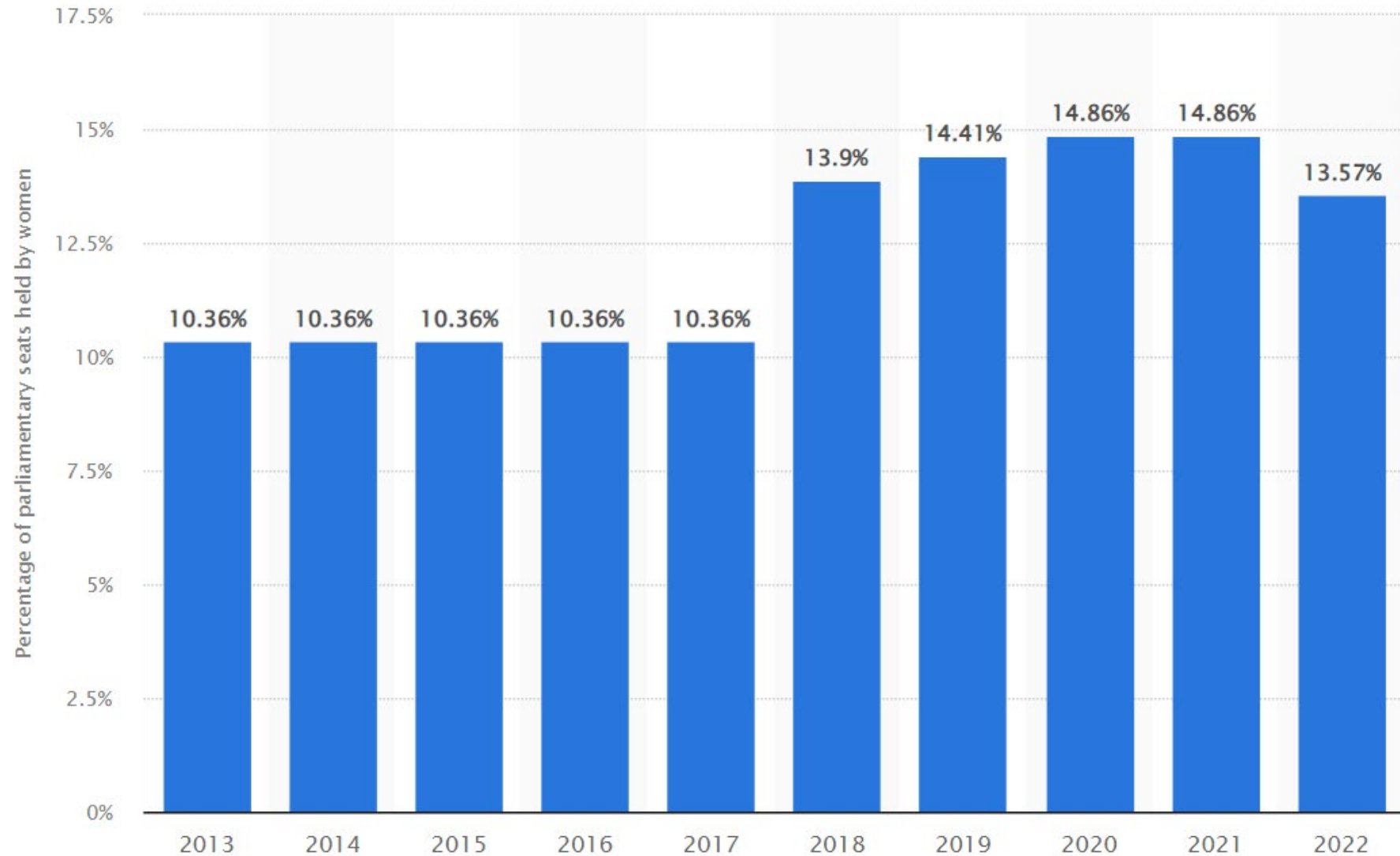


Images of women candidates

- Sexist portrayals of women in the media have a bystander effect on women citizens, stifling ambition among those who, in a less sexist media environment, would be willing to stand as political candidates.
- Media sexism- (re)production of societal sexism through under- and misrepresentation of women in media, leading to a false portrayal of society through a gendered lens.



Women in Parliament 2013-2022



Source: Statista.com