

[< Back to results](#) | 1 of 1[Download](#) [Print](#) [Save to PDF](#) [Save to list](#) [Create bibliography](#)[Brain Sciences](#) • [Open Access](#) • Volume 13, Issue 9 • September 2023 • Article number 1340**Document type**Article • [Gold Open Access](#) • [Green Open Access](#)**Source type**

Journal

**ISSN**

20763425

**DOI**

10.3390/brainsci13091340

[View more](#)

# Mental Stress Classification Based on Selected Electroencephalography Channels Using Correlation Coefficient of Hjorth Parameters

[Hag, Ala<sup>a</sup>](#) ; [Al-Shargie, Fares<sup>b</sup>](#) ; [Handayani, Dini<sup>c</sup>](#) ; [Asadi, Houshyar<sup>d</sup>](#)[Save all to author list](#)<sup>a</sup> School of Computer Science & Engineering, Taylor's University, Jalan Taylors, Selangor, Subang Jaya, 47500, Malaysia<sup>b</sup> Institute for Intelligent Systems Research and Innovation, Deakin University, Geelong, 3216, VIC, Australia<sup>c</sup> Department of Electrical Engineering, Abu Dhabi University, Abu Dhabi P.O. Box 59911, United Arab Emirates<sup>d</sup> Computer Science Department, KICT, International Islamic University Malaysia, Selangor, Kuala Lumpur, 53100, Malaysia[Full text options](#) [Export](#) [Abstract](#)[Author keywords](#)[Reaxys Chemistry database information](#)[Indexed keywords](#)[SciVal Topics](#)[Metrics](#)[Funding details](#)**Abstract**

Electroencephalography (EEG) signals offer invaluable insights into diverse activities of the human brain, including the intricate physiological and psychological responses associated with mental stress. A major challenge, however, is accurately identifying mental stress while mitigating the limitations associated with a large number of EEG channels. Such limitations encompass computational complexity, potential overfitting, and the prolonged setup time for electrode placement, all of which can hinder practical applications. To address these challenges, this study presents the novel CCHP method, aimed at identifying and ranking commonly optimal EEG channels based on their sensitivity

Cited by 0 documents

Inform me when this document is cited in Scopus:

[Set citation alert >](#)**Related documents**[Eeg mental stress assessment using hybrid multi-domain feature sets of functional connectivity network and time-frequency features](#)[Hag, A. , Handayani, D. , Pillai, T. \(2021\) \*Sensors\*](#)[A wearable single EEG channel analysis for mental stress state detection](#)[Hag, A. , Handayani, D. , Pillai, T. \(2021\) \*7th International Conference on Computing, Engineering and Design, ICCED 2021\*](#)[A Parallel Fusion RNN-LSTM Approach to Classify Mental Stress using EEG Data](#)[Gupta, M.V. , Vaikole, S.L. \(2022\) \*International Journal of Engineering Trends and Technology\*](#)[View all related documents based on references](#)[Find more related documents in Scopus based on:](#) [View PDF](#)[Authors >](#) [Keywords >](#)

to the mental stress state. This method's uniqueness lies in its ability not only to find common channels, but also to prioritize them according to their responsiveness to stress, ensuring consistency across subjects and making it potentially transformative for real-world applications. From our rigorous examinations, eight channels emerged as universally optimal in detecting stress variances across participants. Leveraging features from the time, frequency, and time–frequency domains of these channels, and employing machine learning algorithms, notably RLDA, SVM, and KNN, our approach achieved a remarkable accuracy of 81.56% with the SVM algorithm outperforming existing methodologies. The implications of this research are profound, offering a stepping stone toward the development of real-time stress detection devices, and consequently, enabling clinicians to make more informed therapeutic decisions based on comprehensive brain activity monitoring. © 2023 by the authors.

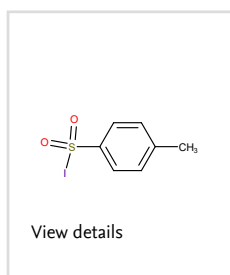
### Author keywords

channel selection; EEG; Hjorth parameters; machine learning; stress recognition

### Reaxys Chemistry database information ⓘ

Substances

[View all substances \(1\)](#)



Powered by [Reaxys](#)

Indexed keywords ∨

SciVal Topics ⓘ ∨

Metrics ∨

Funding details ∨

### References (64)

[View in search results format >](#)

[View PDF](#)

All

[CSV export](#) ∨ [Print](#) [E-mail](#) [Save to PDF](#)

[Create bibliography](#)

- 1 Dedovic, K., Renwick, R., Mahani, N.K., Engert, V., Lupien, S.J., Pruessner, J.C.  
The Montreal Imaging Stress Task: Using functional imaging to investigate the effects of perceiving and processing psychosocial stress in the human brain

(2005) *Journal of Psychiatry and Neuroscience*, 30 (5), pp. 319-325. Cited 488 times.

[View at Publisher](#)

- 2 Al-Shargie, F., Tang, T.B., Kiguchi, M.  
Stress Assessment Based on Decision Fusion of EEG and fNIRS Signals

(2017) *IEEE Access*, 5, art. no. 8045994, pp. 19889-19896. Cited 63 times.  
<http://ieeexplore.ieee.org/xpl/RecentIssue.jsp?punumber=6287639>  
doi: 10.1109/ACCESS.2017.2754325

[View at Publisher](#)

- 3 Halim, Z., Rehan, M.  
On identification of driving-induced stress using electroencephalogram signals: A framework based on wearable safety-critical scheme and machine learning  
(2020) *Information Fusion*, 53, pp. 66-79. Cited 141 times.  
<http://www.elsevier.com/inca/publications/store/6/2/0/8/6/2/index.htm>  
doi: 10.1016/j.inffus.2019.06.006  
View at Publisher
- 

- 4 Aspiotis, V., Miltiadous, A., Kalafatakis, K., Tzamourta, K.D., Giannakeas, N., Tsipouras, M.G., Peschos, D., (...), Tzallas, A.T.  
Assessing Electroencephalography as a Stress Indicator: A VR High-Altitude Scenario Monitored through EEG and ECG  
(2022) *Sensors*, 22 (15), art. no. 5792. Cited 13 times.  
<http://www.mdpi.com/journal/sensors>  
doi: 10.3390/s22155792  
View at Publisher
- 

- 5 Peksa, J., Mamchur, D.  
State-of-the-Art on Brain-Computer Interface Technology  
(2023) *Sensors*, 23 (13), art. no. 6001. Cited 2 times.  
<http://www.mdpi.com/journal/sensors>  
doi: 10.3390/s23136001  
View at Publisher
- 

- 6 Sharif, M.S., Raj Theeng Tamang, M., Fu, C.H.Y., Baker, A., Alzahrani, A.I., Alalwan, N.  
An Innovative Random-Forest-Based Model to Assess the Health Impacts of Regular Commuting Using Non-Invasive Wearable Sensors  
(2023) *Sensors*, 23 (6), art. no. 3274.  
<http://www.mdpi.com/journal/sensors>  
doi: 10.3390/s23063274  
View at Publisher
- 

- 7 Xin, Q., Hu, S., Liu, S., Zhao, L., Zhang, Y.-D.  
An Attention-Based Wavelet Convolution Neural Network for Epilepsy EEG Classification  
(2022) *IEEE Transactions on Neural Systems and Rehabilitation Engineering*, 30, pp. 957-966. Cited 21 times.  
<https://ieeexplore.ieee.org/xpl/mostRecentIssue.jsp?punumber=7333>  
doi: 10.1109/TNSRE.2022.3166181  
View at Publisher
- 

- 8 Hashempour, S., Boostani, R., Mohammadi, M., Sanei, S.  
Continuous Scoring of Depression From EEG Signals via a Hybrid of Convolutional Neural Networks ([Open Access](#))  
(2022) *IEEE Transactions on Neural Systems and Rehabilitation Engineering*, 30, pp. 176-183. Cited 15 times.  
<https://ieeexplore.ieee.org/xpl/mostRecentIssue.jsp?punumber=7333>  
doi: 10.1109/TNSRE.2022.3143162  
View at Publisher
- 

View PDF

- 9 Wu, W., Zhang, Y., Jiang, J., Lucas, M.V., Fonzo, G.A., Rolle, C.E., Cooper, C., (...), Etkin, A.  
An electroencephalographic signature predicts antidepressant response in major depression  
(2020) *Nature Biotechnology*, 38 (4), pp. 439-447. Cited 140 times.  
<http://www.nature.com/nbt/index.html>  
doi: 10.1038/s41587-019-0397-3  
View at Publisher
- 
- 10 Song, Y., Yin, Y., Xu, P.  
A Customized ECA-CRNN Model for Emotion Recognition Based on EEG Signals ([Open Access](#))  
(2023) *Electronics (Switzerland)*, 12 (13), art. no. 2900. Cited 2 times.  
[www.mdpi.com/journal/electronics](http://www.mdpi.com/journal/electronics)  
doi: 10.3390/electronics12132900  
View at Publisher
- 
- 11 Al-shargie, F., Tang, T.B., Badruddin, N., Kiguchi, M.  
Towards multilevel mental stress assessment using SVM with ECOC: an EEG approach ([Open Access](#))  
(2018) *Medical and Biological Engineering and Computing*, 56 (1), pp. 125-136. Cited 113 times.  
<http://link.springer.com/journal/11517>  
doi: 10.1007/s11517-017-1733-8  
View at Publisher
- 
- 12 Hag, A., Handayani, D., Pillai, T., Mantoro, T., Kit, M.H., Al-Shargie, F.  
A wearable single EEG channel analysis for mental stress state detection ([Open Access](#))  
(2021) *7th International Conference on Computing, Engineering and Design, ICCED 2021*. Cited 3 times.  
<http://ieeexplore.ieee.org/xpl/mostRecentIssue.jsp?punumber=9664749>  
ISBN: 978-166543996-1  
doi: 10.1109/ICCED53389.2021.9664880  
View at Publisher
- 
- 13 Hag, A., Handayani, D., Altalhi, M., Pillai, T., Mantoro, T., Kit, M.H., Al-Shargie, F.  
Enhancing EEG-based mental stress state recognition using an improved hybrid feature selection algorithm  
(2021) *Sensors*, 21 (24), art. no. 8370. Cited 12 times.  
<https://www.mdpi.com/1424-8220/21/24/8370/pdf>  
doi: 10.3390/s21248370  
View at Publisher
- 
- 14 Yu, Y., Liu, Y., Yin, E., Jiang, J., Zhou, Z., Hu, D.  
An Asynchronous Hybrid Spelling Approach Based on EEG-EOG Signals for Chinese Character Input  
(2019) *IEEE Transactions on Neural Systems and Rehabilitation Engineering*, 27 (6), art. no. 8708258, pp. 1292-1302. Cited 54 times.  
<https://ieeexplore.ieee.org/xpl/mostRecentIssue.jsp?punumber=7333>  
doi: 10.1109/TNSRE.2019.2914916  
View at Publisher

View PDF

- 15 Park, Y., Chung, W.  
Optimal Channel Selection Using Correlation Coefficient for CSP Based EEG Classification ([Open Access](#))  
  
(2020) *IEEE Access*, 8, art. no. 9119424, pp. 111514-111521. Cited 31 times.  
<http://ieeexplore.ieee.org/xpl/RecentIssue.jsp?punumber=6287639>  
doi: 10.1109/ACCESS.2020.3003056  
  
View at Publisher
- 
- 16 Narayanan, A.M., Patrinos, P., Bertrand, A.  
Optimal Versus Approximate Channel Selection Methods for EEG Decoding with Application to Topology-Constrained Neuro-Sensor Networks ([Open Access](#))  
  
(2021) *IEEE Transactions on Neural Systems and Rehabilitation Engineering*, 29, art. no. 9247294, pp. 92-102. Cited 6 times.  
<https://ieeexplore.ieee.org/xpl/mostRecentIssue.jsp?punumber=7333>  
doi: 10.1109/TNSRE.2020.3035499  
  
View at Publisher
- 
- 17 Gaur, P., McCreddie, K., Pachori, R.B., Wang, H., Prasad, G.  
An automatic subject specific channel selection method for enhancing motor imagery classification in EEG-BCI using correlation  
  
(2021) *Biomedical Signal Processing and Control*, 68, art. no. 102574. Cited 48 times.  
[http://www.elsevier.com/wps/find/journalbibliographicinfo.cws\\_home/706718/description#bibliographicinfo](http://www.elsevier.com/wps/find/journalbibliographicinfo.cws_home/706718/description#bibliographicinfo)  
doi: 10.1016/j.bspc.2021.102574  
  
View at Publisher
- 
- 18 Shen, J., Zhang, X., Huang, X., Wu, M., Gao, J., Lu, D., Ding, Z., (...), Hu, B.  
An Optimal Channel Selection for EEG-Based Depression Detection via Kernel-Target Alignment ([Open Access](#))  
  
(2021) *IEEE Journal of Biomedical and Health Informatics*, 25 (7), art. no. 9298808, pp. 2545-2556. Cited 35 times.  
<http://ieeexplore.ieee.org/xpl/RecentIssue.jsp?punumber=6221020>  
doi: 10.1109/JBHI.2020.3045718  
  
View at Publisher
- 
- 19 Yin, X., Meng, M., She, Q., Gao, Y., Luo, Z.  
Optimal channel-based sparse time-frequency blocks common spatial pattern feature extraction method for motor imagery classification ([Open Access](#))  
  
(2021) *Mathematical Biosciences and Engineering*, 18 (4), pp. 4247-4263. Cited 10 times.  
<http://www.aimspress.com/article/doi/10.3934/mbe.2021213>  
doi: 10.3934/mbe.2021213  
  
View at Publisher
- 
- 20 Qi, F., Wu, W., Yu, Z.L., Gu, Z., Wen, Z., Yu, T., Li, Y.  
Spatiotemporal-Filtering-Based Channel Selection for Single-Trial EEG Classification ([Open Access](#))  
  
(2021) *IEEE Transactions on Cybernetics*, 51 (2), art. no. 8964299, pp. 558-567. Cited 36 times.  
<https://www.ieee.org/membership-catalog/productdetail/>  
doi: 10.1109/TCYB.2019.2963709  
  
View at Publisher

View PDF

- 21 Qiu, Z., Jin, J., Lam, H.-K., Zhang, Y., Wang, X., Cichocki, A.  
Improved SFFS method for channel selection in motor  
imagery based BCI (Open Access)

(2016) *Neurocomputing*, 207, pp. 519-527. Cited 108 times.  
[www.elsevier.com/locate/neucom](http://www.elsevier.com/locate/neucom)  
doi: 10.1016/j.neucom.2016.05.035

[View at Publisher](#)

- 22 Wang, Z.-M., Hu, S.-Y., Song, H.  
Channel Selection Method for EEG Emotion Recognition  
Using Normalized Mutual Information

(2019) *IEEE Access*, 7, art. no. 8851133, pp. 143303-143311. Cited 76 times.  
<http://ieeexplore.ieee.org/xpl/RecentIssue.jsp?punumber=6287639>  
doi: 10.1109/ACCESS.2019.2944273

[View at Publisher](#)

- 23 Bavkar, S., Iyer, B., Deosarkar, S.  
Optimal EEG channels selection for alcoholism screening  
using EMD domain statistical features and harmony search  
algorithm (Open Access)

(2021) *Biocybernetics and Biomedical Engineering*, 41 (1), pp. 83-96. Cited 17  
times.  
<http://www.sciencedirect.com/science/journal/02085216>  
doi: 10.1016/j.bbe.2020.11.001

[View at Publisher](#)

- 24 Jin, J., Miao, Y., Daly, I., Zuo, C., Hu, D., Cichocki, A.  
Correlation-based channel selection and regularized feature  
optimization for MI-based BCI (Open Access)

(2019) *Neural Networks*, 118, pp. 262-270. Cited 228 times.  
[www.elsevier.com/locate/neucom](http://www.elsevier.com/locate/neucom)  
doi: 10.1016/j.neunet.2019.07.008

[View at Publisher](#)

- 25 Liu, Q., Liu, Y., Chen, K., Wang, L., Li, Z., Ai, Q., Ma, L.  
Research on channel selection and multi-feature fusion of  
EEG signals for mental fatigue detection

(2021) *Entropy*, 23 (4), art. no. 457. Cited 15 times.  
<https://www.mdpi.com/1099-4300/23/4/457/pdf>  
doi: 10.3390/e23040457

[View at Publisher](#)

[View PDF](#)

- 26 Oh, S.H., Lee, Y.R., Kim, H.N.  
A Novel EEG Feature Extraction Method Using Hjorth Parameter  
(2014) *Int. J. Electr. Electron. Eng*, 2, pp. 106-110. Cited 191 times.

- 27 Hjorth, B.  
EEG analysis based on time domain properties

(1970) *Electroencephalography and Clinical Neurophysiology*, 29 (3), pp. 306-  
310. Cited 1041 times.  
doi: 10.1016/0013-4694(70)90143-4

[View at Publisher](#)

- 28 Leite, J.P.R.R., Moreno, R.L.  
Heartbeat classification with low computational cost using Hjorth parameters ([Open Access](#))  
  
(2018) *IET Signal Processing*, 12 (4), pp. 431-438. Cited 25 times.  
[www.ietdl.org/IET-SPR](http://www.ietdl.org/IET-SPR)  
doi: 10.1049/iet-spr.2017.0296  
  
View at Publisher
- 
- 29 Rahman, M.M., Sarkar, A.K., Hossain, M.A., Hossain, M.S., Islam, M.R., Hossain, M.B., Quinn, J.M.W., (...), Moni, M.A.  
Recognition of human emotions using EEG signals: A review ([Open Access](#))  
  
(2021) *Computers in Biology and Medicine*, 136, art. no. 104696. Cited 68 times.  
[www.elsevier.com/locate/combiomed](http://www.elsevier.com/locate/combiomed)  
doi: 10.1016/j.combiomed.2021.104696  
  
View at Publisher
- 
- 30 Safi, M.S., Safi, S.M.M.  
Early detection of Alzheimer's disease from EEG signals using Hjorth parameters ([Open Access](#))  
  
(2021) *Biomedical Signal Processing and Control*, 65, art. no. 102338. Cited 72 times.  
[http://www.elsevier.com/wps/find/journalbibliographicinfo.cws\\_home/706718/description#bibliographicinfo](http://www.elsevier.com/wps/find/journalbibliographicinfo.cws_home/706718/description#bibliographicinfo)  
doi: 10.1016/j.bspc.2020.102338  
  
View at Publisher
- 
- 31 Jin, L., Qu, H., Pang, L., Zhang, Z.  
Sensitive Channel Selection for Mental Workload Classification ([Open Access](#))  
  
(2022) *Mathematics*, 10 (13), art. no. 2266. Cited 2 times.  
<https://www.mdpi.com/2227-7390/10/13/2266/pdf?version=1656474634>  
doi: 10.3390/math10132266  
  
View at Publisher
- 
- 32 Moctezuma, L.A., Molinas, M.  
EEG Channel-Selection Method for Epileptic-Seizure Classification Based on Multi-Objective Optimization  
  
(2020) *Frontiers in Neuroscience*, 14, art. no. 593. Cited 49 times.  
<https://www.frontiersin.org/journals/neuroscience#>  
doi: 10.3389/fnins.2020.00593  
  
View at Publisher
- 
- 33 Malviya, L., Mal, S.  
A novel technique for stress detection from EEG signal using hybrid deep learning model ([Open Access](#))  
  
(2022) *Neural Computing and Applications*, 34 (22), pp. 19819-19830. Cited 7 times.  
<https://www.springer.com/journal/521>  
doi: 10.1007/s00521-022-07540-7  
  
View at Publisher

View PDF

- 34 Shi, Y., Li, Y., Koike, Y.  
Sparse Logistic Regression-Based EEG Channel Optimization Algorithm for Improved Universality across Participants  
(2023) *Bioengineering*, 10 (6), art. no. 664. Cited 2 times.  
[www.mdpi.com/journal/bioengineering](http://www.mdpi.com/journal/bioengineering)  
doi: 10.3390/bioengineering10060664  
View at Publisher
- 
- 35 Hasan, M.A.H., Khan, M.U., Mishra, D.  
A Computationally Efficient Method for Hybrid EEG-fNIRS BCI Based on the Pearson Correlation ([Open Access](#))  
(2020) *BioMed Research International*, 2020, art. no. 1838140. Cited 19 times.  
<http://www.hindawi.com/journals/biomed/>  
doi: 10.1155/2020/1838140  
View at Publisher
- 
- 36 Pawan, Dhiman, R.  
Electroencephalogram channel selection based on pearson correlation coefficient for motor imagery-brain-computer interface  
(2023) *Measurement: Sensors*, 25, art. no. 100616. Cited 13 times.  
[www.journals.elsevier.com/measurement-sensors](http://www.journals.elsevier.com/measurement-sensors)  
doi: 10.1016/j.measen.2022.100616  
View at Publisher
- 
- 37 Yu, J., Yu, Z.L.  
Cross-correlation based discriminant criterion for channel selection in motor imagery BCI systems ([Open Access](#))  
(2021) *Journal of Neural Engineering*, 18 (4), art. no. 046083. Cited 6 times.  
<https://iopscience.iop.org/article/10.1088/1741-2552/ac0583>  
doi: 10.1088/1741-2552/ac0583  
View at Publisher
- 
- 38 Jin, J., Xiao, R., Daly, I., Miao, Y., Wang, X., Cichocki, A.  
Internal Feature Selection Method of CSP Based on L1-Norm and Dempster-Shafer Theory ([Open Access](#))  
(2021) *IEEE Transactions on Neural Networks and Learning Systems*, 32 (11), pp. 4814-4825. Cited 134 times.  
<http://ieeexplore.ieee.org/xpl/RecentIssue.jsp?punumber=5962385>  
doi: 10.1109/TNNLS.2020.3015505  
View at Publisher
- 
- 39 Koelstra, S., Mühl, C., Soleymani, M., Lee, J.-S., Yazdani, A., Ebrahimi, T., Pun, T., (...), Patras, I.  
DEAP: A database for emotion analysis; Using physiological signals ([Open Access](#))  
(2012) *IEEE Transactions on Affective Computing*, 3 (1), art. no. 5871728, pp. 18-31. Cited 2854 times.  
doi: 10.1109/T-AFFC.2011.15  
View at Publisher
- 
- 40 Morris, J.D.  
Observations: SAM: The Self-Assessment Manikin—An Efficient Cross-Cultural Measurement of Emotional Response  
(1995) *J. Advert. Res*, 35, pp. 63-68. Cited 434 times.

View PDF



- 41 Hasan, M.J., Kim, J.-M.  
A hybrid feature pool-based emotional stress state detection algorithm using EEG signals ([Open Access](#))  
  
(2019) *Brain Sciences*, 9 (12), art. no. 376. Cited 35 times.  
<https://www.mdpi.com/2076-3425/9/12/376/pdf>  
doi: 10.3390/brainsci9120376  
  
View at Publisher
- 
- 42 Shon, D., Im, K., Park, J.-H., Lim, D.-S., Jang, B., Kim, J.-M.  
Emotional stress state detection using genetic algorithm-based feature selection on EEG signals ([Open Access](#))  
  
(2018) *International Journal of Environmental Research and Public Health*, 15 (11), art. no. 2461. Cited 87 times.  
<https://www.mdpi.com/1660-4601/15/11/2461/pdf>  
doi: 10.3390/ijerph15112461  
  
View at Publisher
- 
- 43 Esteller, R., Vachtsevanos, G., Echaz, J., Litt, B.  
A Comparison of waveform fractal dimension algorithms ([Open Access](#))  
  
(2001) *IEEE Transactions on Circuits and Systems I: Fundamental Theory and Applications*, 48 (2), pp. 177-183. Cited 389 times.  
doi: 10.1109/81.904882  
  
View at Publisher
- 
- 44 Boonyakitanont, P., Lek-uthai, A., Chomtho, K., Songsiri, J.  
A review of feature extraction and performance evaluation in epileptic seizure detection using EEG ([Open Access](#))  
  
(2020) *Biomedical Signal Processing and Control*, 57, art. no. 101702. Cited 175 times.  
[http://www.elsevier.com/locate/journalbibliographicinfo.cws\\_home/706718/description#bibliographicinfo](http://www.elsevier.com/locate/journalbibliographicinfo.cws_home/706718/description#bibliographicinfo)  
doi: 10.1016/j.bspc.2019.101702  
  
View at Publisher
- 
- 45 Cai, H., Han, J., Chen, Y., Sha, X., Wang, Z., Hu, B., Yang, J., (...), Gutknecht, J.  
A Pervasive Approach to EEG-Based Depression Detection  
  
(2018) *Complexity*, 2018, art. no. 5238028. Cited 165 times.  
<https://www.hindawi.com/journals/complexity/>  
doi: 10.1155/2018/5238028  
  
View at Publisher
- 
- 46 Subhani, A.R., Mumtaz, W., Saad, M.N.B.M., Kamel, N., Malik, A.S.  
Machine learning framework for the detection of mental stress at multiple levels ([Open Access](#))  
  
(2017) *IEEE Access*, 5, art. no. 7968419, pp. 13545-13556. Cited 160 times.  
<http://ieeexplore.ieee.org/xpl/RecentIssue.jsp?punumber=6287639>  
doi: 10.1109/ACCESS.2017.2723622  
  
View at Publisher

View PDF

- 47 Al-Shargie, F., Tang, T.B., Badruddin, N., Dass, S.C., Kiguchi, M.  
Mental stress assessment based on feature level fusion of fNIRS and EEG signals ([Open Access](#))
- (2016) *International Conference on Intelligent and Advanced Systems, ICIAS 2016*, art. no. 7824060. Cited 12 times.  
ISBN: 978-150900845-2  
doi: 10.1109/ICIAS.2016.7824060
- [View at Publisher](#)
- 

- 48 Tian, Y., Zhang, H., Xu, W., Zhang, H., Yang, L., Zheng, S., Shi, Y.  
Spectral entropy can predict changes of working memory performance reduced by short-time training in the delayed-match-to-sample task ([Open Access](#))
- (2017) *Frontiers in Human Neuroscience*, 11, art. no. 437. Cited 42 times.  
<http://journal.frontiersin.org/article/10.3389/fnhum.2017.00437/full>  
doi: 10.3389/fnhum.2017.00437
- [View at Publisher](#)
- 

- 49 Yang, Y., Kyrgyzov, O., Wiart, J., Bloch, I.  
Subject-specific channel selection for classification of motor imagery electroencephalographic data ([Open Access](#))
- (2013) *ICASSP, IEEE International Conference on Acoustics, Speech and Signal Processing - Proceedings*, art. no. 6637856, pp. 1277-1280. Cited 33 times.  
ISBN: 978-147990356-6  
doi: 10.1109/ICASSP.2013.6637856
- [View at Publisher](#)
- 

- 50 Candra, H., Yuwono, M., Chai, R., Handojoseno, A., Elamvazuthi, I., Nguyen, H.T., Su, S.  
Investigation of window size in classification of EEG-emotion signal with wavelet entropy and support vector machine
- (2015) *Proceedings of the Annual International Conference of the IEEE Engineering in Medicine and Biology Society, EMBS, 2015-November*, art. no. 7320065, pp. 7250-7253. Cited 113 times.  
ISBN: 978-142449271-8  
doi: 10.1109/EMBC.2015.7320065
- [View at Publisher](#)
- [View PDF](#)
- 

- 51 Jebelli, H., Hwang, S., Lee, S.  
EEG-based workers' stress recognition at construction sites ([Open Access](#))
- (2018) *Automation in Construction*, 93, pp. 315-324. Cited 200 times.  
doi: 10.1016/j.autcon.2018.05.027
- [View at Publisher](#)
- 

- 52 Frascini, M., Demuru, M., Crobe, A., Marrosu, F., Stam, C.J., Hillebrand, A.  
The effect of epoch length on estimated EEG functional connectivity and brain network organisation ([Open Access](#))
- (2016) *Journal of Neural Engineering*, 13 (3), art. no. 036015. Cited 163 times.  
<http://iopscience.iop.org/article/10.1088/1741-2560/13/3/036015/pdf>  
doi: 10.1088/1741-2560/13/3/036015
- [View at Publisher](#)
-

- 53 Al-Shargie, F., Tariq, U., Alex, M., Mir, H., Al-Nashash, H.  
Emotion Recognition Based on Fusion of Local Cortical Activations and Dynamic Functional Networks Connectivity: An EEG Study ([Open Access](#))  
(2019) *IEEE Access*, 7, art. no. 8849985, pp. 143550-143562. Cited 39 times.  
<http://ieeexplore.ieee.org/xpl/RecentIssue.jsp?punumber=6287639>  
doi: 10.1109/ACCESS.2019.2944008  
[View at Publisher](#)
- 
- 54 Alex, M., Tariq, U., Al-Shargie, F., Mir, H.S., Al Nashash, H.  
Discrimination of genuine and acted emotional expressions using EEG signal and machine learning ([Open Access](#))  
(2020) *IEEE Access*, 8, art. no. 09233330, pp. 191080-191089. Cited 19 times.  
<http://ieeexplore.ieee.org/xpl/RecentIssue.jsp?punumber=6287639>  
doi: 10.1109/ACCESS.2020.3032380  
[View at Publisher](#)
- 
- 55 Hag, A., Handayani, D., Pillai, T., Mantoro, T., Kit, M.H., Al-Shargie, F.  
Eeg mental stress assessment using hybrid multi-domain feature sets of functional connectivity network and time-frequency features  
(2021) *Sensors*, 21 (18), art. no. 6300. Cited 14 times.  
<https://www.mdpi.com/1424-8220/21/18/6300/pdf>  
doi: 10.3390/s21186300  
[View at Publisher](#)
- 
- 56 Patel, A., Nariani, D., Rai, A.  
Mental Stress Detection using EEG and Recurrent Deep Learning ([Open Access](#))  
(2023) *APSCON 2023 - IEEE Applied Sensing Conference, Symposium Proceedings*  
<http://ieeexplore.ieee.org/xpl/mostRecentIssue.jsp?punumber=10100963>  
ISBN: 978-166546163-4  
doi: 10.1109/APSCON56343.2023.10100977  
[View at Publisher](#)
- 
- 57 Katmah, R., Al-Shargie, F., Tariq, U., Babiloni, F., Al-Mughairbi, F., Al-Nashash, H.  
A review on mental stress assessment methods using eeg signals ([Open Access](#))  
(2021) *Sensors*, 21 (15), art. no. 5043. Cited 84 times.  
<https://www.mdpi.com/1424-8220/21/15/5043/pdf>  
doi: 10.3390/s21155043  
[View at Publisher](#)
- 
- 58 Al-Shargie, F., Tang, T.B., Badruddin, N., Kiguchi, M.  
Simultaneous measurement of EEG-fNIRS in classifying and localizing brain activation to mental stress ([Open Access](#))  
(2015) *IEEE 2015 International Conference on Signal and Image Processing Applications, ICSIPA 2015 - Proceedings*, art. no. 7412205, pp. 282-286. Cited 24 times.  
ISBN: 978-147998996-6  
doi: 10.1109/ICSIPA.2015.7412205  
[View at Publisher](#)

[View PDF](#)

- 59 Al-Shargie, F., Tang, T.B., Kiguchi, M.  
Mental stress grading based on fNIRS signals ([Open Access](#))  
(2016) *Proceedings of the Annual International Conference of the IEEE Engineering in Medicine and Biology Society, EMBS*, 2016–October, art. no. 7591884, pp. 5140–5143. Cited 26 times.  
ISBN: 978-145770220-4  
doi: 10.1109/EMBC.2016.7591884  
[View at Publisher](#)

- 60 Li, Z., Qiu, L., Li, R., He, Z., Xiao, J., Liang, Y., Wang, F., (...), Pan, J.  
Enhancing BCI-based emotion recognition using an improved particle swarm optimization for feature selection  
(2020) *Sensors (Switzerland)*, 20 (11), art. no. 3028. Cited 34 times.  
<https://www.mdpi.com/1424-8220/20/11/3028/pdf>  
doi: 10.3390/s20113028  
[View at Publisher](#)

- 61 Wang, Z., Zhang, Z., Wang, W.  
Emotion recognition based on framework of BADEBA-SVM ([Open Access](#))  
(2019) *Mathematical Problems in Engineering*, 2019, art. no. 9875250. Cited 9 times.  
<http://www.hindawi.com/journals/mpe/contents.html>  
doi: 10.1155/2019/9875250  
[View at Publisher](#)

- 62 Hussien, A.G., Oliva, D., Houssein, E.H., Juan, A.A., Yu, X.  
Binary whale optimization algorithm for dimensionality reduction  
(2020) *Mathematics*, 8 (10), art. no. 1821, pp. 1–24. Cited 63 times.  
<https://www.mdpi.com/2227-7390/8/10/1821/pdf>  
doi: 10.3390/math8101821  
[View at Publisher](#)

- 63 Liu, J., Wu, G., Luo, Y., Qiu, S., Yang, S., Li, W., Bi, Y.  
EEG-Based Emotion Classification Using a Deep Neural Network and Sparse Autoencoder ([Open Access](#))  
(2020) *Frontiers in Systems Neuroscience*, 14, art. no. 43. Cited 127 times.  
<https://www.frontiersin.org/journals/systems-neuroscience>  
doi: 10.3389/fnsys.2020.00043  
[View at Publisher](#)

[View PDF](#)

- 64 Al-Shargie, F.M., Hassanin, O., Tariq, U., Al-Nashash, H.  
EEG-Based Semantic Vigilance Level Classification Using Directed Connectivity Patterns and Graph Theory Analysis ([Open Access](#))  
(2020) *IEEE Access*, 8, art. no. 9123605, pp. 115941–115956. Cited 28 times.  
<http://ieeexplore.ieee.org/xpl/RecentIssue.jsp?punumber=6287639>  
doi: 10.1109/ACCESS.2020.3004504  
[View at Publisher](#)

🔍 Al-Shargie, F.; Institute for Intelligent Systems Research and Innovation, Deakin University, Geelong, VIC, Australia; email:faresalshargie@yahoo.com  
© Copyright 2023 Elsevier B.V., All rights reserved.

---

## About Scopus

[What is Scopus](#)

[Content coverage](#)

[Scopus blog](#)

[Scopus API](#)

[Privacy matters](#)

## Language

[日本語版を表示する](#)

[查看简体中文版本](#)

[查看繁體中文版本](#)

[Просмотр версии на русском языке](#)

## Customer Service

[Help](#)

[Tutorials](#)

[Contact us](#)

---

## ELSEVIER

[Terms and conditions ↗](#) [Privacy policy ↗](#)

All content on this site: Copyright © 2024 Elsevier B.V. ↗, its licensors, and contributors. All rights are reserved, including those for text and data mining, AI training, and similar technologies. For all open access content, the Creative Commons licensing terms apply.

We use cookies to help provide and enhance our service and tailor content. By continuing, you agree to the use of cookies ↗.



[View PDF](#)